

Somerset Pharmaceutical Needs Assessment

2025-2028

Annex – Locality Profiles

CONTENTS

1 BRIDGWATER.....	3
2 CENTRAL MENDIP	7
3 CHARD, LANGPORT, AND ILMINSTER (CLICK).....	11
4 FROME.....	15
5 NORTH SEDGEMOOR	19
6 SOUTH SOMERSET EAST	23
7 SOUTH SOMERSET WEST.....	27
8 TAUNTON CENTRAL AND TONE VALLEY.....	31
9 TAUNTON DEANE WEST	35
10 WEST MENDIP.....	39
11 WEST SOMERSET.....	43
12 YEOVIL	47

Unless stated otherwise all data regarding pharmacy opening hours, and services delivered is from January 2025, provided by South West Pharmacy (except the council commissioned services, which are provided by Somerset Council Public Health).

1 Bridgwater

The Bridgwater area is in the centre of the county. The main settlement is Bridgwater, which has grown significantly in recent years. This is set to continue, as 1,166 are planned to be built between 2025/26 – 2027/28. The locality is the site of Hinkley Point C, the nuclear reactor whose development is having a big impact on the economy and demography of the county. Much of the Hinkley Point workforce is accommodated in Bridgwater.

Bridgwater has a population of 81,255. 18,498 (23%) live in the most deprived 20% of the national population, as identified by IMD.

For more information on the population, and health needs see the Primary Care Network (PCN) profiles in the annexes.

Pharmaceutical Services:

There are a total of 12 community pharmacies, and five dispensing practices in Bridgwater (there is also one DAC in this locality). This equates to 2.1 pharmaceutical providers per 10,000 population. In Bridgwater there was 95,1813 items dispensed in 2023/2024, an average of 11.7 items per person¹.

Table 1: Pharmaceutical Services, Bridgwater

Service	Number Community Pharmacy Providing
Appliance Usage review	0
Community Pharmacy Influenza Vaccine	9
Contraception Service	8
Emergency hormonal contraception (Council commissioned)	10
Health Checks (Council commissioned)	1
Hypertension Case Finding	10
New Medicine Service	12
Nicotine Replacement Therapy (Council commissioned)	1
Pharmacy First	10
Stoma appliance customisation	1
Smoking Cessation	10
Varenicline (Council commissioned)	3

For more information and mapping of where these services are available, please see annex for PNA data.

Access

Although the health needs of Bridgwater are somewhat greater than the average for the county, the main types of ill health are similar, and pharmacies are concentrated in the urban area of Bridgwater town and so close to the main areas of deprivation. The rural areas are served by five dispensing GP practices. As of January 2025, there are opening hours on all days of the week, from the start of working hours into the late evening. On the weekends there is less choice of services, however based on the access criteria set the majority of the locality has acceptable levels of coverage. The maps of travel times suggest adequate access for the

large majority of the population; the areas which fall outside of the access criteria are either sparsely population or unpopulated.

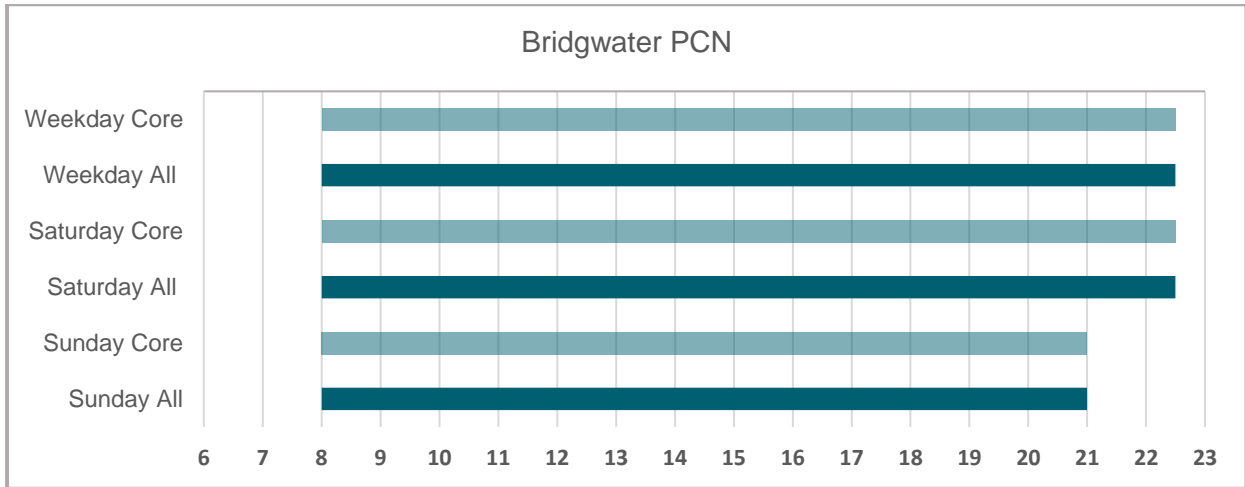


Figure 1: Opening Hours of community pharmacies.

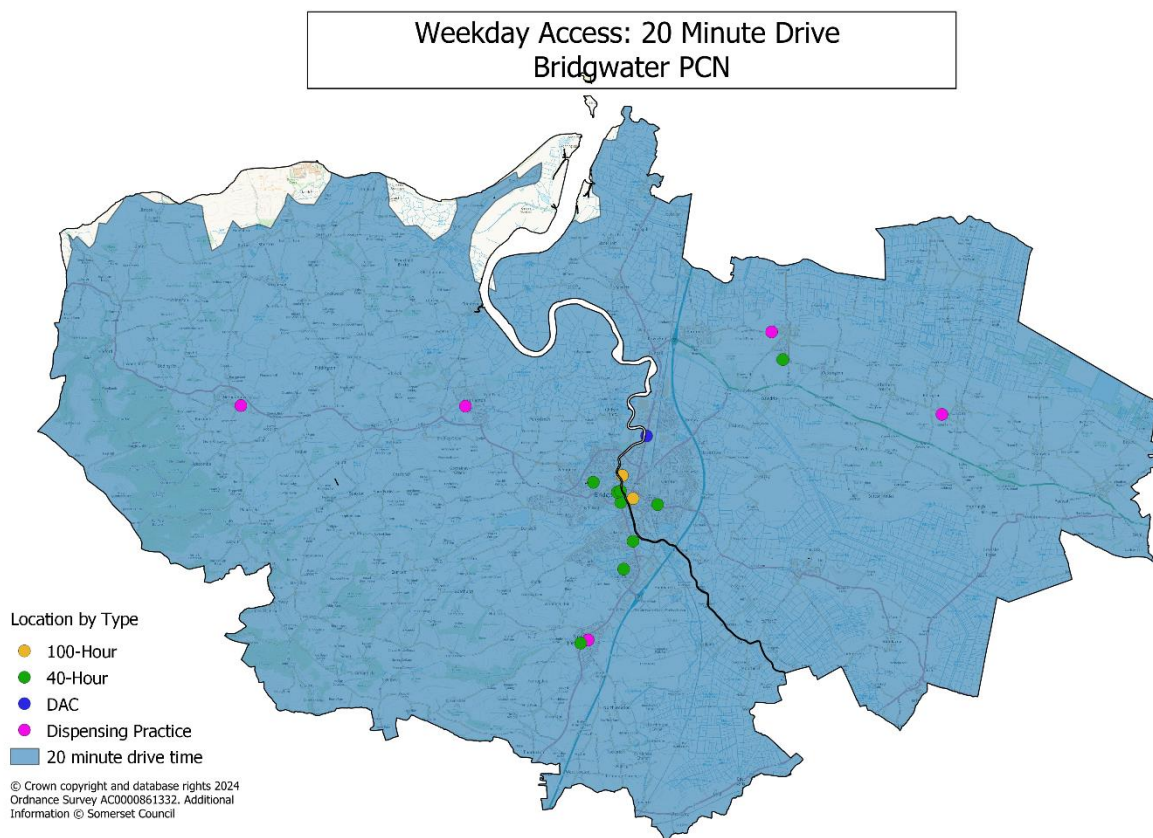


Figure 2: Weekday Access: 20-minute drive time. January 2025 data.

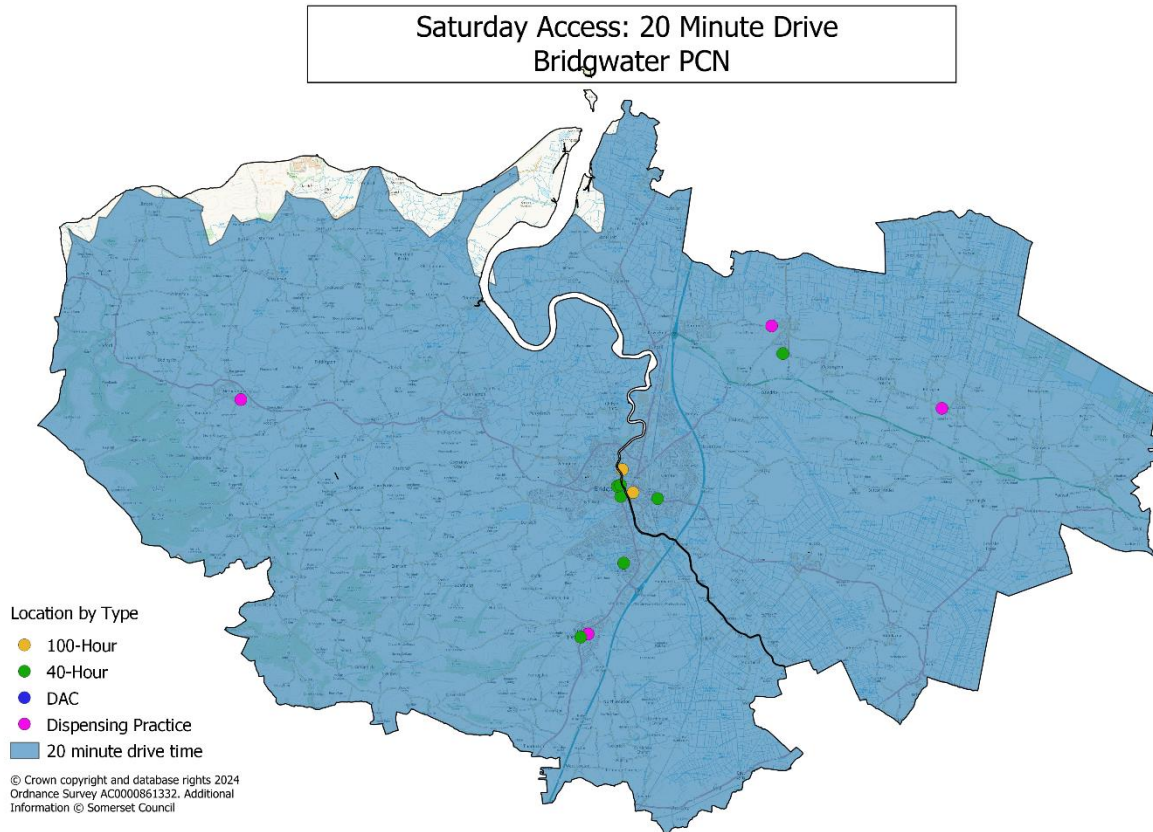


Figure 3: Saturday Access: 20-minute drive time. January 2025 data.

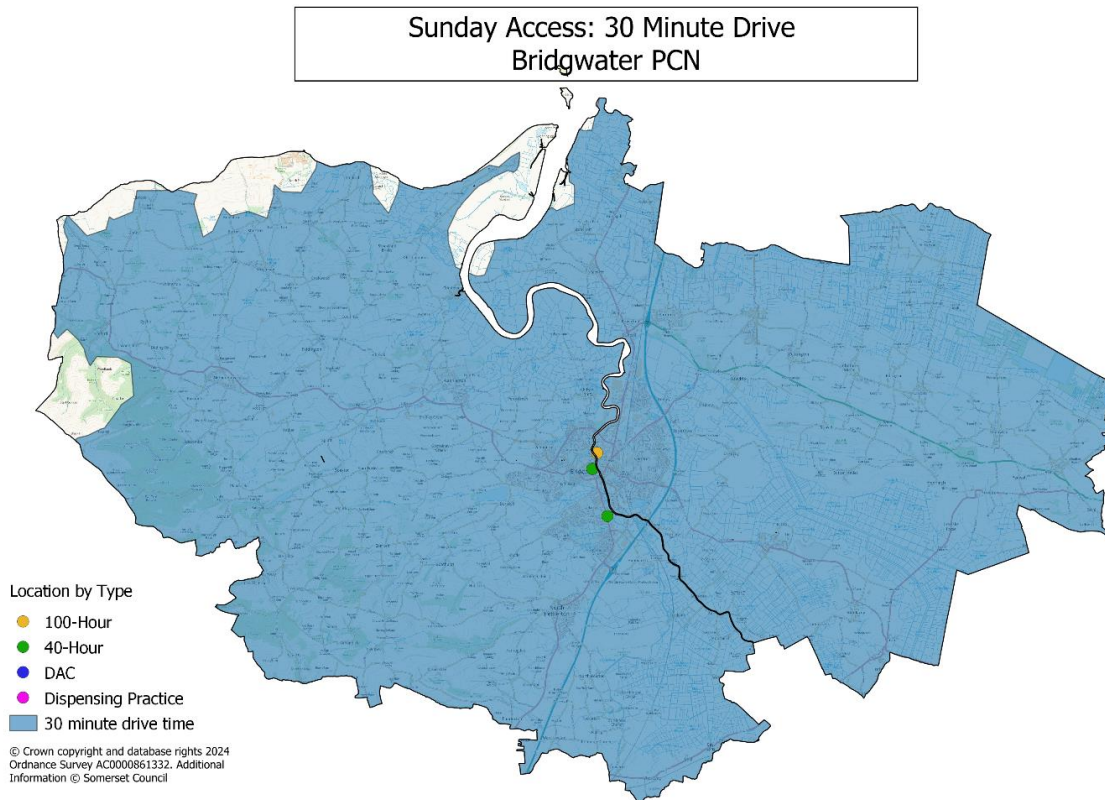


Figure 4: Sunday Access: 30-minute drive time. January 2025 data.

Gap Analysis

All necessary services are widely available within this locality.

The level of housebuilding in the locality is expected to be relatively high across the county, within the Bridgwater locality the plans are close to already urban areas, which are well served by pharmacies with approximately an additional 1,200 dwellings are expected to be built over the PNA period, as long as this number is not exceeded by 50% (over 1,800 dwellings) we would not seek to review the evidence for pharmaceutical need. This growth in population is not expected to create demand for any entirely new service.

On the basis of the information we have, we conclude that there is no current gap in the provision of necessary services in Bridgwater area, or expected future gap based on the predicted level of population growth and housing development.

Improvements to Access

All advanced services are provided within the locality. We note that AURs are available in Bridgwater area from Distance Appliance Contractors, including one based in the area.

2 Central Mendip

The Central Mendip Primary Care Network locality is in the north east of Somerset and has a border with Bath and North East Somerset to the north. The largest settlement is Shepton Mallet; more than half the population is rural. It is a small locality, and some services are provided by Wells, Glastonbury and Street to the west, and Frome to the east. There are 511 planned houses in this locality for the duration of this PNA.

This locality has a population of 32,837, none of whom live in an LSOA which is in the 20% most deprived population nationally (core20).

For more information on the population, and health needs see: see the Primary Care Network (PCN) profiles in the annexes.

Pharmaceutical Services:

There are a total of four community pharmacies, and four dispensing practices in Central Mendip. This equates to 2.4 pharmaceutical providers per 10,000 population. In this locality there was 322825 items dispensed in 2023/4, an average of 9.8 items per person.

Table 2: Pharmaceutical Services, Central Mendip

Service	Number Community Pharmacy Providing
Appliance Usage review	0
Community Pharmacy Influenza Vaccine	4
Contraception Service	4
Emergency hormonal contraception (Council commissioned)	3
Health Checks (Council commissioned)	0
Hypertension Case Finding	4
New Medicine Service	4
Nicotine Replacement Therapy (Council commissioned)	1
Pharmacy First	4
Stoma appliance customisation	0
Smoking Cessation	4
Varenicline (Council commissioned)	1

Access

The health needs of Central Mendip are very similar to the county average. There are opening hours on all days of the week within the locality, and as based on the set access criteria the maps below suggest adequate access to services for all the population.

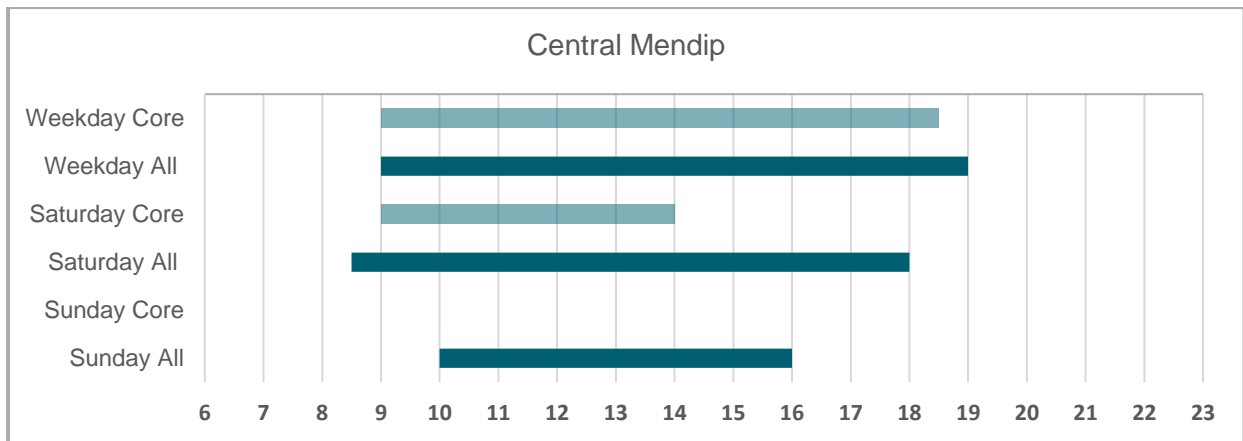


Figure 5: Opening times of community pharmacy in the locality

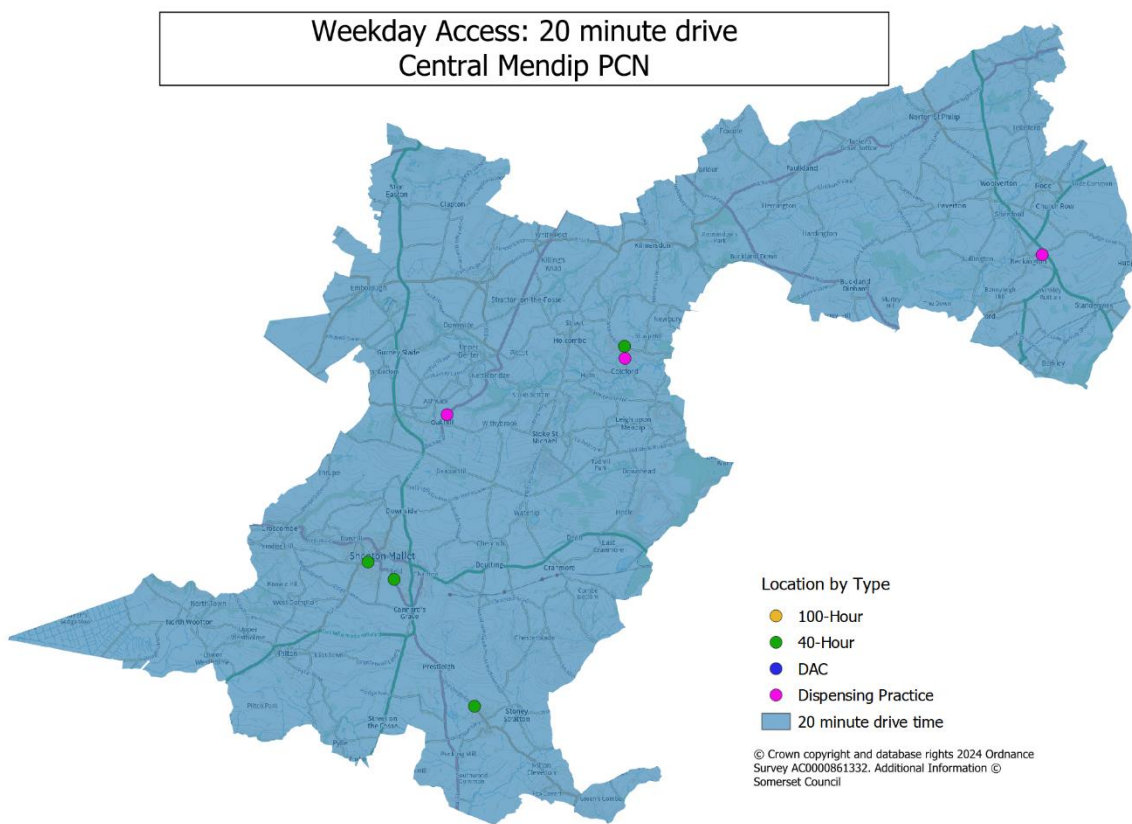


Figure 6: Weekday access: 20 minutes' drive time

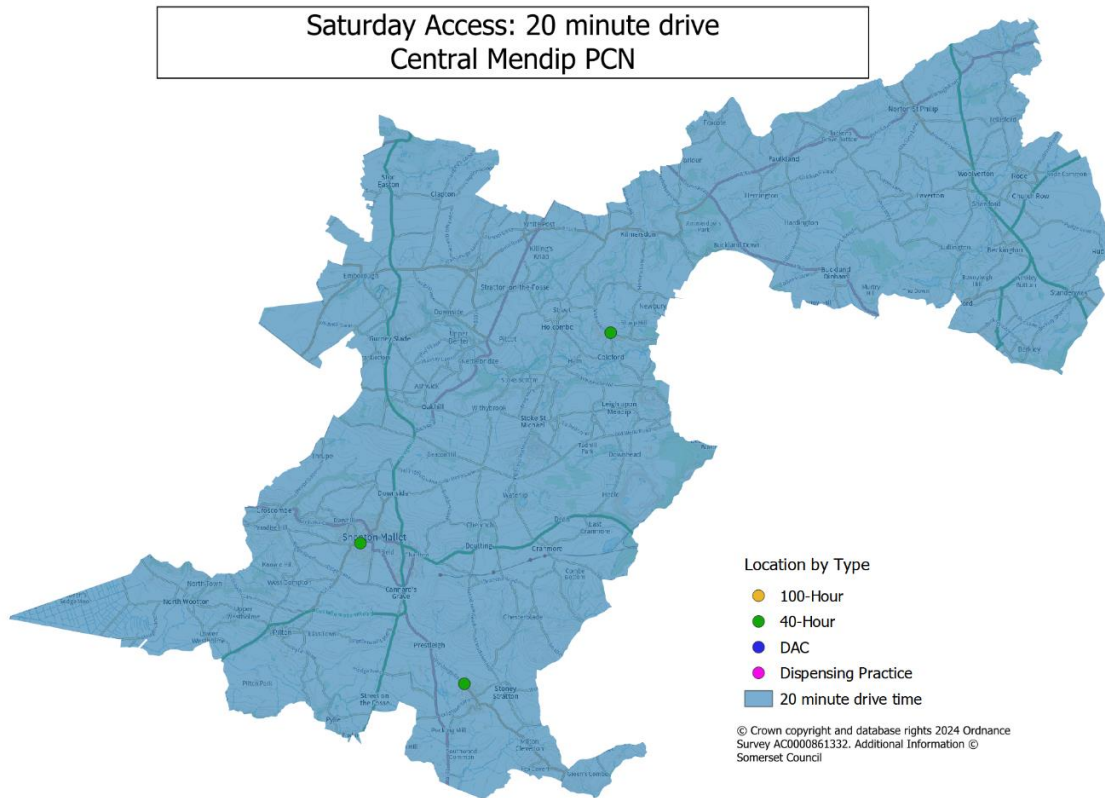


Figure 7: Saturday access: 20-minute' drive time

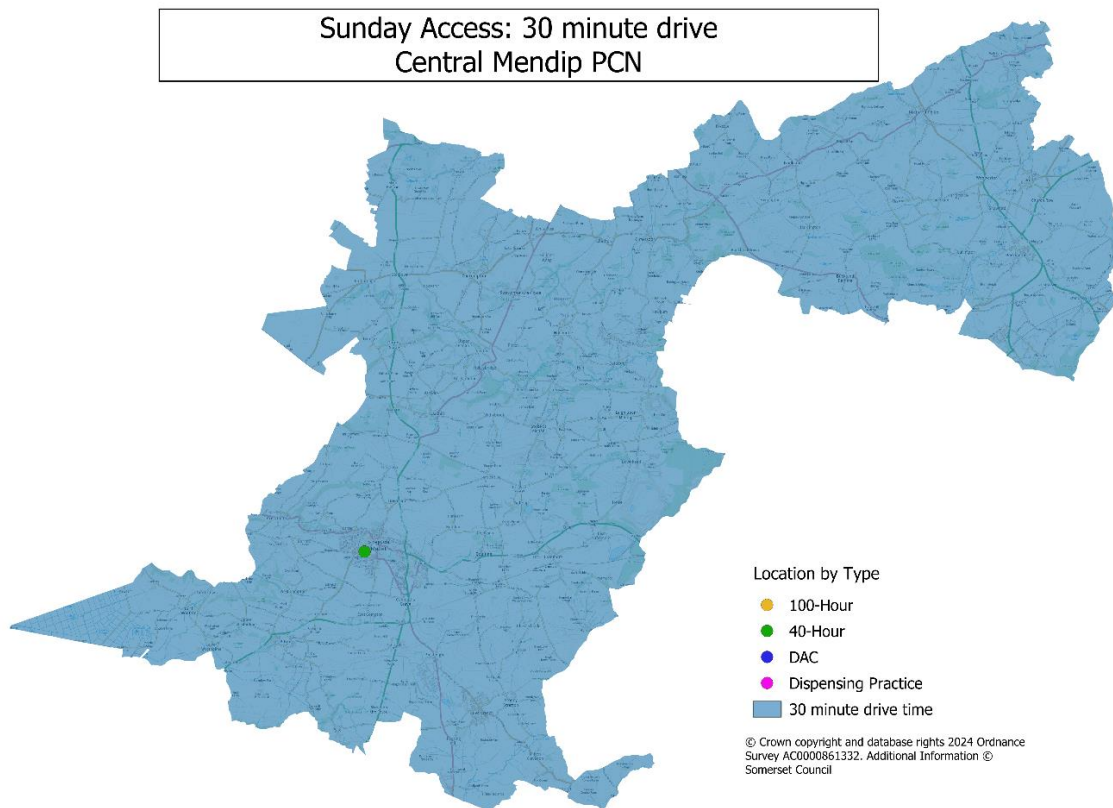


Figure 8: Sunday access: 30-minute drive time

Gap Analysis

All necessary services are widely available in this locality, all of which are accessible within the access criteria set.

Planned levels of housebuilding in this locality is approximately 500 dwellings, based on which we can conclude that there would be no gap in service created, unless this is exceeded by an additional contingency (total dwellings 1000), we would not seek to review the pharmaceutical provision. This growth in population is not expected to create demand for any entirely new service.

On the basis of the information we have, we therefore conclude that there is no current gap in the provision of necessary services in Central Mendip, or expected future gap based on the predicted level of population growth and housing development.

Improvements to Access

Appliance Use Reviews and Stoma Customization Service are not provided from pharmacies in the locality; and AURs are available from DAC. All other advanced services are available in this locality.

3 Chard, Langport, and Iminster (CLICK)

This is a largely rural locality, in the south of the county, bordering Dorset and Devon. The main settlements give it its name. At one-point Crewkerne (now in South Somerset West) was part of this area: the acronym is retained for its resonance.

This locality has a population of 44,772, 1,279 (3%) of which are within the 20% most deprived (core20 population). There are approximately 200 planned dwellings in this locality for the duration of this PNA.

For more information on the population, and health needs see the Primary Care Network (PCN) profiles in the annexes.

Pharmaceutical Services:

There are a total of five community pharmacies, and four dispensing practices, as of January 2025. This equates to 2.0 pharmaceutical providers per 10,000 population. In 2023/24 there was 431,144 items dispensed, an average of 9.6 items per person.

Table 3: Pharmaceutical Provision, CLICK

Service	Number Community Pharmacy Providing
Appliance Usage review	0
Community Pharmacy Influenza Vaccine	5
Contraception Service	4
Emergency hormonal contraception (Council commissioned)	5
Health Checks (Council commissioned)	1
Hypertension Case Finding	5
New Medicine Service	5
Nicotine Replacement Therapy (Council commissioned)	2
Pharmacy First	5
Stoma appliance customisation	0
Smoking Cessation	5
Varenicline (Council commissioned)	2

Access

The health needs of adults in CLIC vary little from the county average and do not suggest pharmaceutical needs fundamentally different for the area. The maps of travel times (see main report) suggest that there is adequate access for all of the population.

There is no Sunday opening in the PCN area, but pharmacies in Taunton and Glastonbury serve the northern part, and Crewkerne serves the southern part. Such arrangements did not constitute a gap in provision, as the locality is still covered within the travel time access criteria.

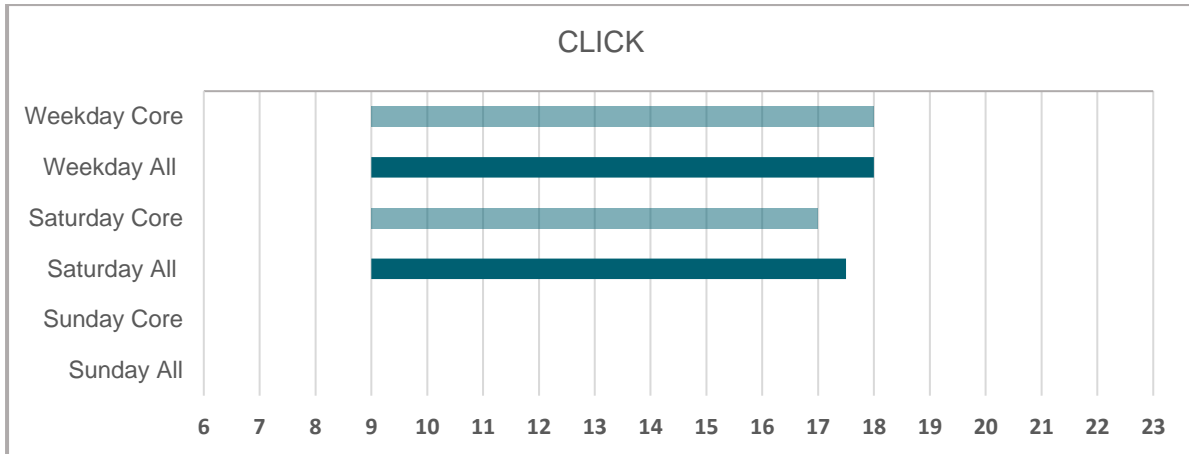


Figure 9: Opening hours of community pharmacy within the locality

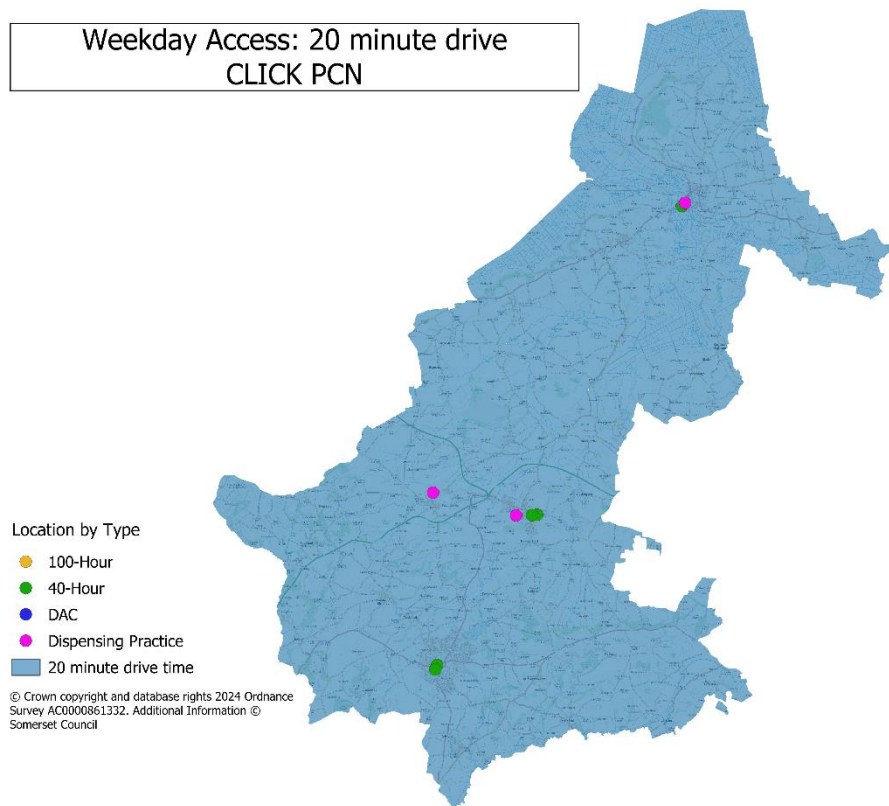


Figure 10: Weekday access: 20-minute drive time

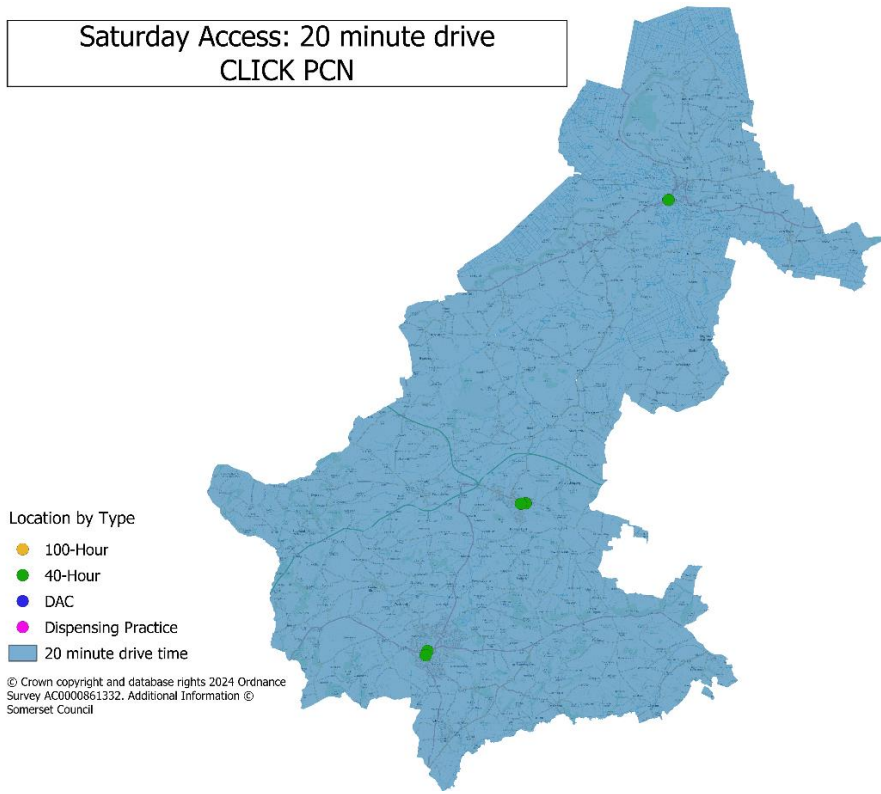


Figure 11: Saturday access: 20-minute drive time

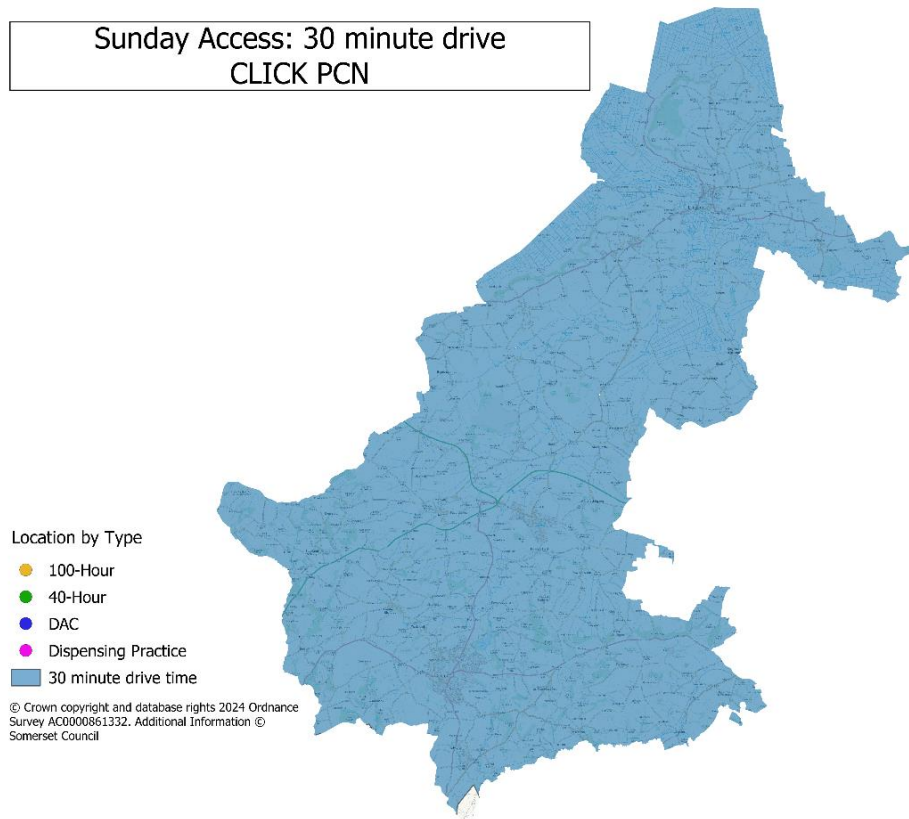


Figure 12: Sunday access: 30-minute drive time

Gap Analysis

All necessary services are widely available in this locality, within the set access criteria.

Planned levels of housebuilding in this locality is approximately 200 dwellings, based on which we can conclude that there would be no gap in service created, unless this is exceeded by an additional contingency (total new dwellings 700), we would not seek to review the pharmaceutical provision.

On the basis of the information we have, we therefore conclude that there is no current gap in the provision of necessary services in CLICK, or expected future gap based on the predicted level of population growth and housing development.

Improvements To Access

Appliance Use Reviews and Stoma Customization Service are not provided from pharmacies in the locality; AURs are however available from DAC. All other advanced services are available in this locality.

There could be gaps created should all pharmacies reduce to only core hours provision; this is however unlikely.

4 Frome

Frome is in the north east of the county, bordering Bath and North East Somerset, and Wiltshire. There is a population of 33,247, the majority which live in the town of Frome. 5% (1541) of the population live in a core20 area (one of the 20% most deprived areas nationally). The expected level of housebuilding over the period of this PNA is approximately 500.

For more information on the population, and health needs see the Primary Care Network (PCN) profiles in the annexes.

7.1.2 Pharmaceutical Services:

There are a total of five community pharmacies, and zero dispensing practices as of January 2025; this equates to 1.5 pharmaceutical providers per 10,000 population. In 2023/24 there was 528,092 items dispensed, an average of 15.9 items per person.

Table 4: Pharmaceutical Services, Frome

Service	Number Community Pharmacy Providing
Appliance Usage review	0
Community Pharmacy Influenza Vaccine	5
Contraception Service	5
Emergency hormonal contraception (Council commissioned)	3
Health Checks (Council commissioned)	0
Hypertension Case Finding	5
New Medicine Service	5
Nicotine Replacement Therapy (Council commissioned)	3
Pharmacy First	5
Stoma appliance customisation	0
Smoking Cessation	5
Varenicline (Council commissioned)	5

Access

The health needs of Frome PCN area are broadly similar to the county average. Pharmacies are concentrated in the urban area of Frome town and so close to the centre of population and main areas of deprivation. The maps of travel times show adequate access for the population based on the access criteria set out. Additionally, opening hours for pharmacies cover weekdays, Saturdays and Sundays.

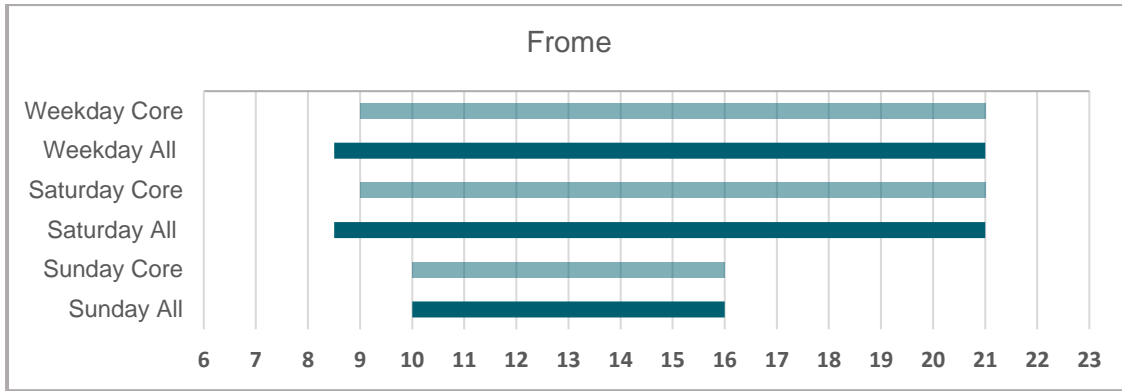


Figure 13: Opening hours of community pharmacy within the locality

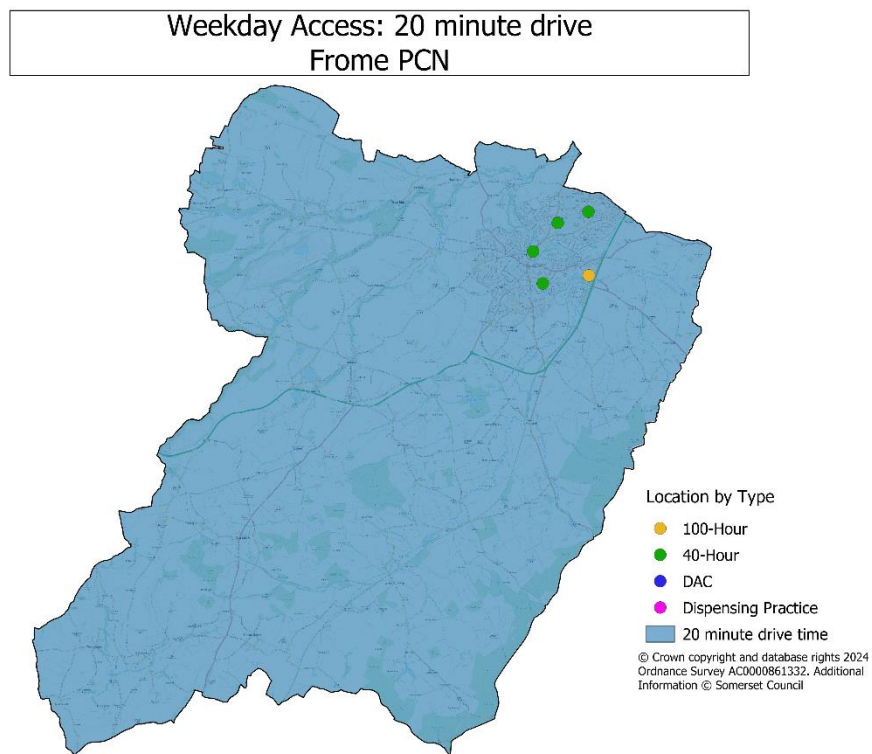


Figure 14: Weekday access: 20-minute drive

Saturday Access: 20 minute drive
From PCN

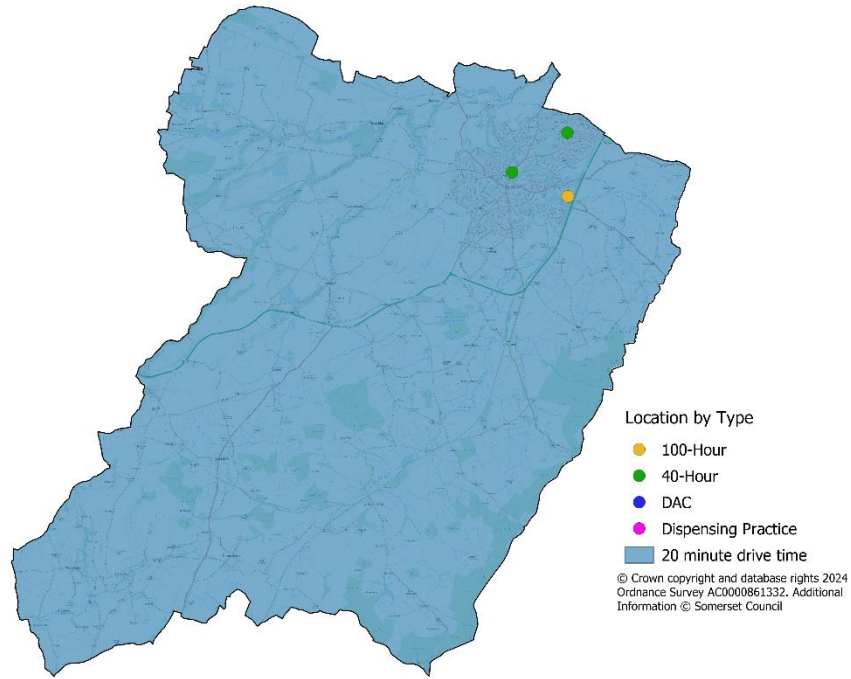


Figure 15: Saturday access: 20-minute drive

Sunday Access: 30 minute drive
From PCN

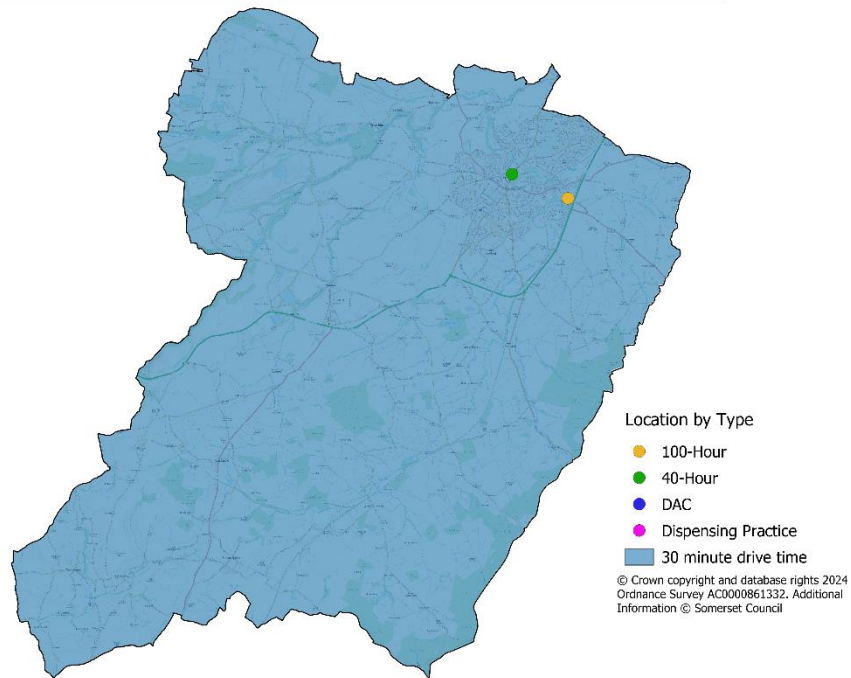


Figure 16: Sunday access: 30-minute drive

Gap Analysis

All necessary services are widely available in this locality, within the set access criteria.

Planned levels of housebuilding in this locality is approximately 500 dwellings, based on which we can conclude that there would be no gap in service created, unless this is exceeded by an additional contingency (total new dwellings 1000), we would not seek to review the pharmaceutical provision.

On the basis of the information we have, we therefore conclude that there is no current gap in the provision of necessary services in Frome locality, or expected future gap based on the predicted level of population growth and housing development.

Improvements To Access

Appliance Use Reviews and Stoma Customization Service are not provided from pharmacies in the locality; AURs are however available from DAC. All other advanced services are available in this locality.

5 North Sedgemoor

North Sedgemoor locality is in the north west of the county, with Burnham-on-Sea, Highbridge, Cheddar, Axbridge, and Wedmore at the largest settlements. Parts of Highbridge are the neighbourhoods that score highest on the index of multiple deprivation (2019) in Somerset. The coastal towns have a high proportion of older people and an influx of holiday makers in the summer. Some inhabitants of the most northern parts may be served by North Somerset, notably Weston-Super-Mare.

There is a population of 48,239 in North Sedgemoor, 3,967 (8%) of which fall into the 20% most deprived population nationally. There are a planned 550 houses in this locality across the 3-year period of this PNA.

For more information on the population, and health needs see the Primary Care Network (PCN) profiles in the annexes.

Pharmaceutical Services:

There are a total of 10 community pharmacies, and one dispensing practice as of January 2025. This equates to 2.3 pharmaceutical providers per 10,000 population. There were 863,267 items dispensed in 2023/4, an average of 17.9 items per person.

Table 5: Pharmaceutical Services, North Sedgemoor

Service	Number Community Pharmacy Providing
Appliance usage review	0
Community Pharmacy Influenza Vaccine	9
Contraception Service	9
Emergency hormonal contraception (Council commissioned)	9
Health Checks (Council commissioned)	4
Hypertension Case Finding	10
New Medicine Service	10
Nicotine Replacement Therapy (Council commissioned)	7
Pharmacy First	10
Stoma appliance customisation	1
Smoking Cessation	10
Varenicline (Council commissioned)	1

Access

Health needs of the North Sedgemoor Primary Care Network area are broadly similar to the county as a whole, and pharmacies are generally located in urban areas, close to centres of population, and identified areas of deprivation. The rural area near Brent is served by a dispensing GP practice. The maps of travel times suggest the vast majority of the population is within the acceptable drive times, the gaps seen in the maps to the north west of the locality are beach, mud flats, and fields – all houses are covered. There is also opening hours on all days of the week.

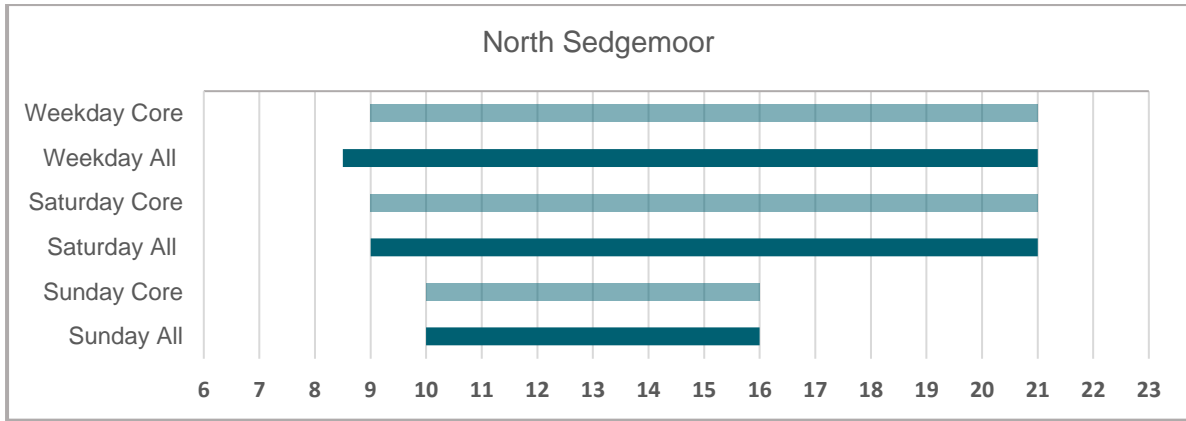


Figure 17: Opening hours of community pharmacy within the locality

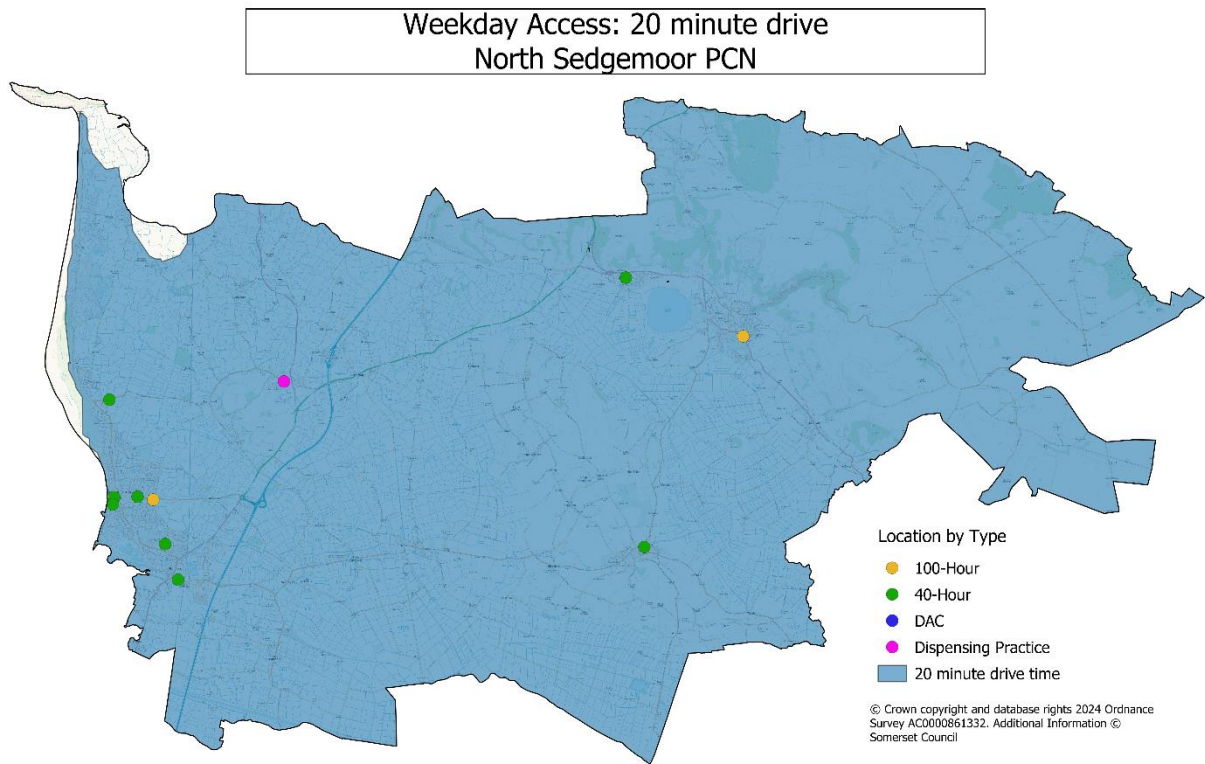


Figure 18: Weekday access: 20-minute drive

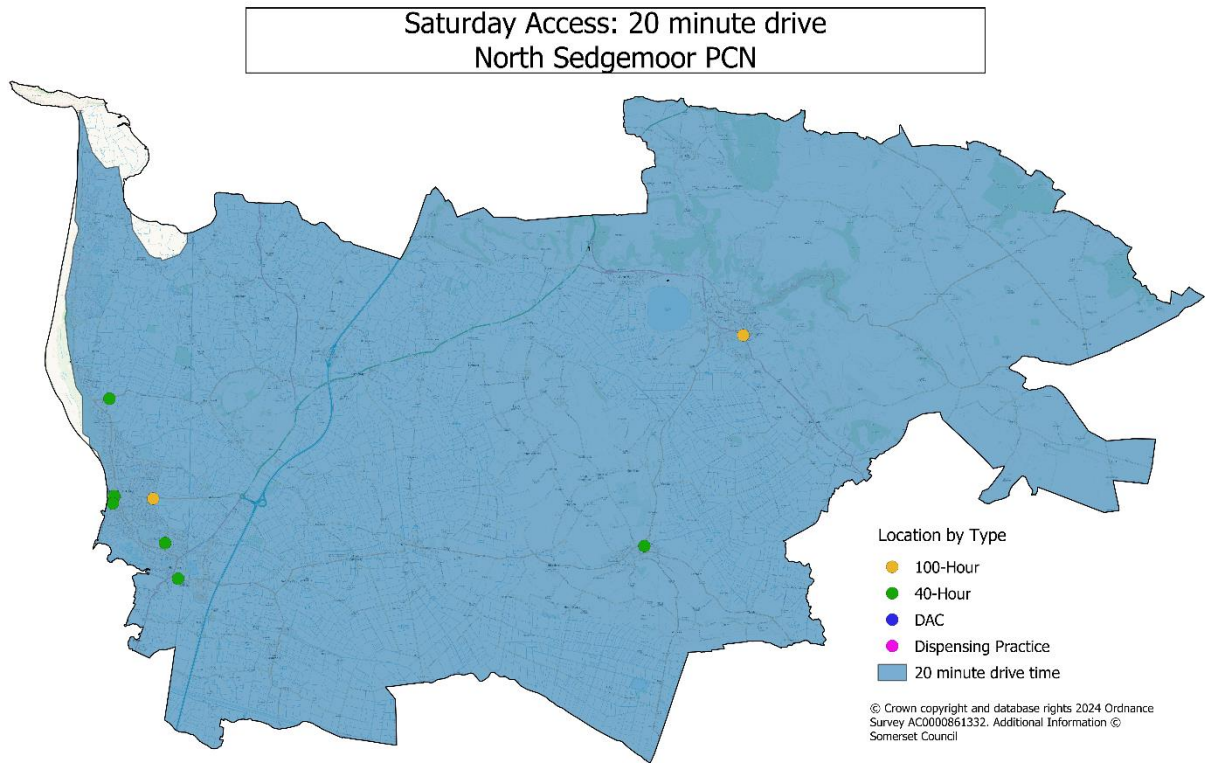


Figure 19: Saturday access: 20-minute drive

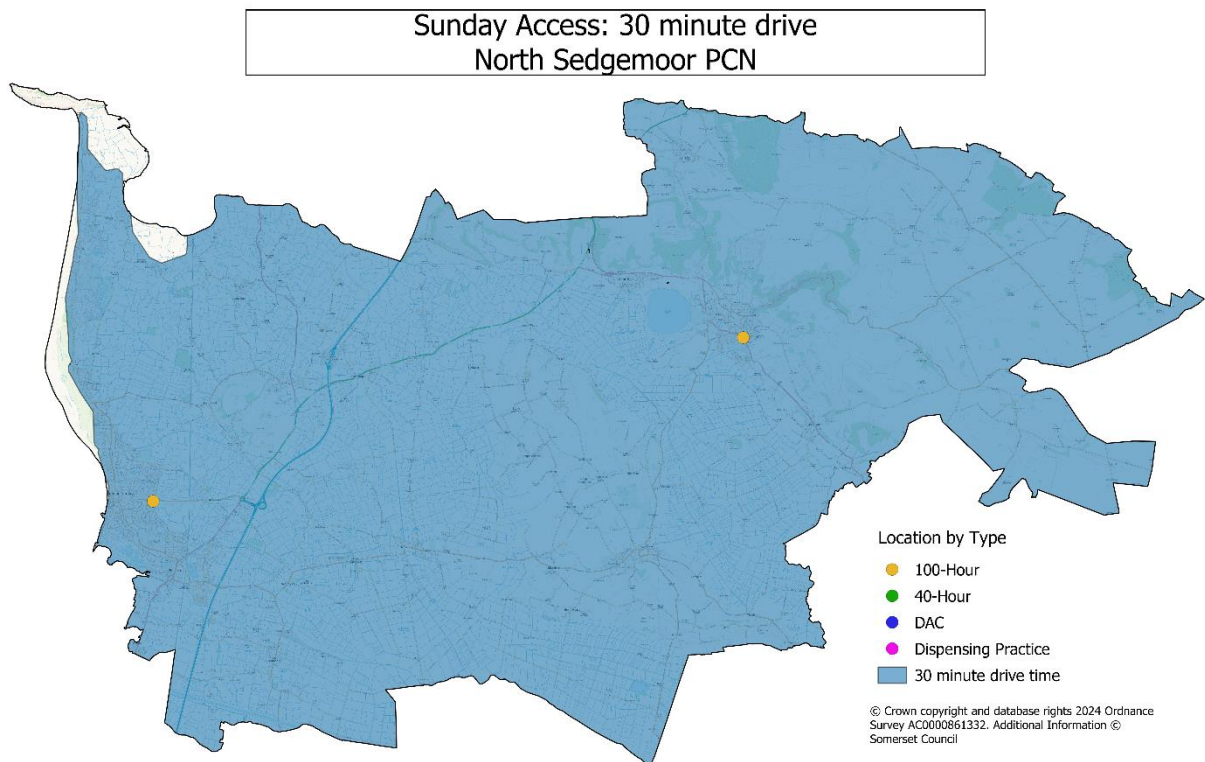


Figure 20: Sunday access: 30-minute drive

Gap Analysis

All necessary services are widely available, in this locality, within the set access criteria.

Planned levels of housebuilding in this locality is approximately 550 dwellings, based on which we can conclude that there would be no gap in service created, unless this is exceeded by an additional contingency (total new dwellings 1050), we would not seek to review the pharmaceutical provision.

On the basis of the information we have, we therefore conclude that there is no current gap in the provision of necessary services in North Sedgemoor locality, or expected future gap based on the predicted level of population growth and housing development.

Improvements To Access

Appliance Use Reviews and Stoma Customization Service are not provided from pharmacies in the locality; AURs are however available from DAC. All other advanced services are available in this locality.

6 South Somerset East

The South Somerset East PCN area is that of the Rural Practices Network. It is, naturally, in the south east of the county, where it borders Wiltshire and Dorset, and is predominantly rural. There is a population of 31,659, 0% of which are part of the 20% most deprived nationally (core20). There is planning for approximately 400 new dwellings in this locality during the time period of this PNA.

For more information on the population, and health needs see the Primary Care Network (PCN) profiles in the annexes.

Pharmaceutical Services:

There are a total of four community pharmacies, and three dispensing practices as of January 2025. This equates to 2.2 pharmaceutical providers per 10,000 population. In 2023/4 there was 459,966 items dispensed, an average of 14.5 items per person.

Table 6: Pharmaceutical Services, South Somerset East

Service	Number Community Pharmacy Providing
Appliance Usage review	0
Community Pharmacy Influenza Vaccine	4
Contraception Service	4
Emergency hormonal contraception (Council commissioned)	3
Health Checks (Council commissioned)	1
Hypertension Case Finding	4
New Medicine Service	4
Nicotine Replacement Therapy (Council commissioned)	3
Pharmacy First	4
Stoma appliance customisation	0
Smoking Cessation	4
Varenicline (Council commissioned)	4

Access

The health needs of adults in South Somerset East vary little from the county average and do not suggest pharmaceutical needs fundamentally different for the area. Pharmacies are located in the market towns, and rural areas are served by the three dispensing practices. Based on the travel times access criteria there is coverage of all of the population on all days of the week. There is no Sunday opening in the locality, but pharmacies in neighbouring localities cover the areas. Such arrangements did not constitute a gap in provision, as the locality is still covered within the travel time access criteria.

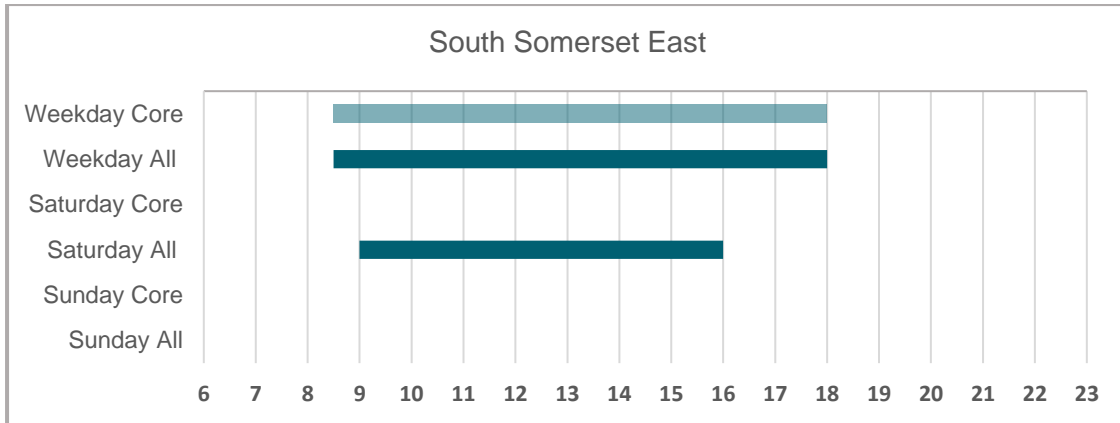


Figure 21: Opening hours of community pharmacy within the locality

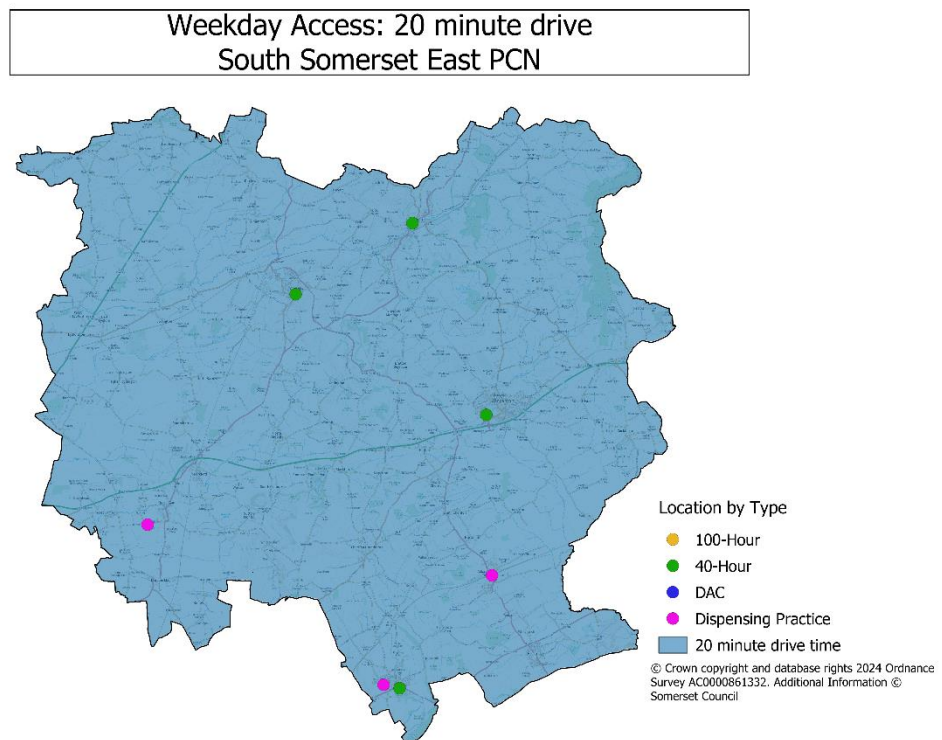


Figure 22: Weekday access: 20-minute drive

Saturday Access: 20 minute drive
South Somerset East PCN

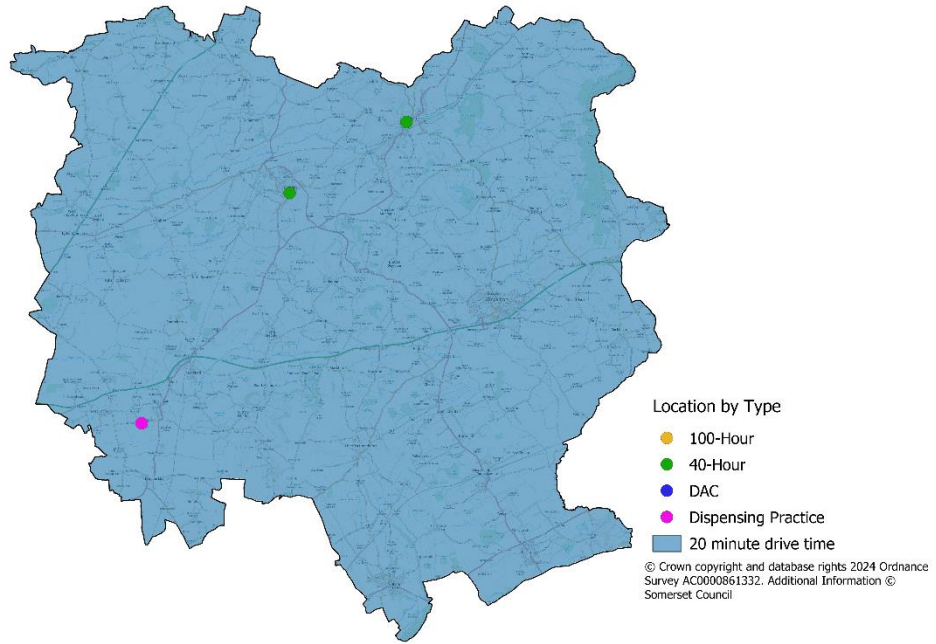


Figure 23: Saturday access: 20-minute drive

Sunday Access: 30 minute drive
South Somerset East PCN

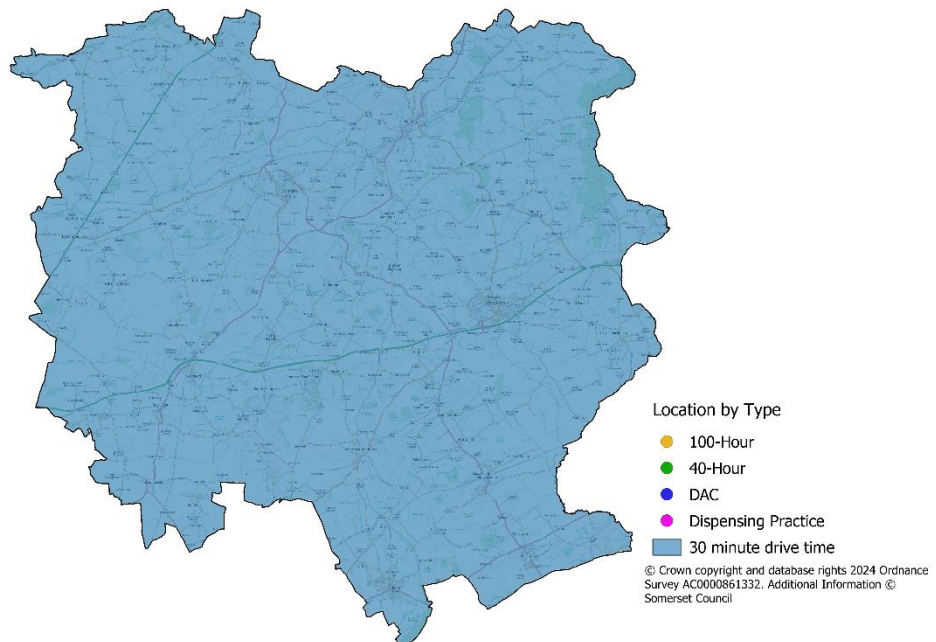


Figure 24: Sunday access: 30-minute drive

Gap Analysis

All necessary services are widely available in this locality, within the set access criteria.

Planned levels of housebuilding in this locality is approximately 400 dwellings, based on which we can conclude that there would be no gap in service created, unless this is exceeded by an additional contingency (total new dwellings 900), we would not seek to review the pharmaceutical provision.

On the basis of the information we have, we therefore conclude that there is no current gap in the provision of necessary services in South Somerset East, or expected future gap based on the predicted level of population growth and housing development.

Improvements To Access

Appliance Use Reviews and Stoma Customization Service are not provided from pharmacies in the locality; and AURs are available from Distance Appliance Contractors. All other advanced services are available in this locality.

7 South Somerset West

This locality is in the south east of Somerset, much of this areas is rural; the main settlements are Crewkerne, Somerton, South Petherton, and Martock.

There is a population of 40,871, none of whom are in the 20% most deprived nationally. There is planned housebuilding of approximately 300 dwellings over the next three years.

For more information on the population, and health needs see the Primary Care Network (PCN) profiles in the annexes.

Pharmaceutical Services:

There are a total of nine community pharmacies, and zero dispensing practices as of January 2025. This equates to 2.2 pharmaceutical providers per 10,000 population. In 2023/24 there was 561,014 items dispensed in 2024, an average of 13.7 items per person.

Table 7: Pharmaceutical Services, South Somerset West

Service	Number Community Pharmacy Providing
Appliance usage review	0
Community Pharmacy Influenza Vaccine	8
Contraception Service	7
Emergency hormonal contraception (Council commissioned)	8
Health Checks (Council commissioned)	0
Hypertension Case Finding	8
New Medicine Service	9
Nicotine Replacement Therapy (Council commissioned)	3
Pharmacy First	8
Stoma appliance customisation	0
Smoking Cessation	9
Varenicline (Council commissioned)	4

Access

The health needs of adults in South Somerset West vary little from the county average and do not suggest pharmaceutical needs fundamentally different for the area. The maps below show that the whole locality is within the set access criteria, and there is opening of pharmacies on every day of the week.

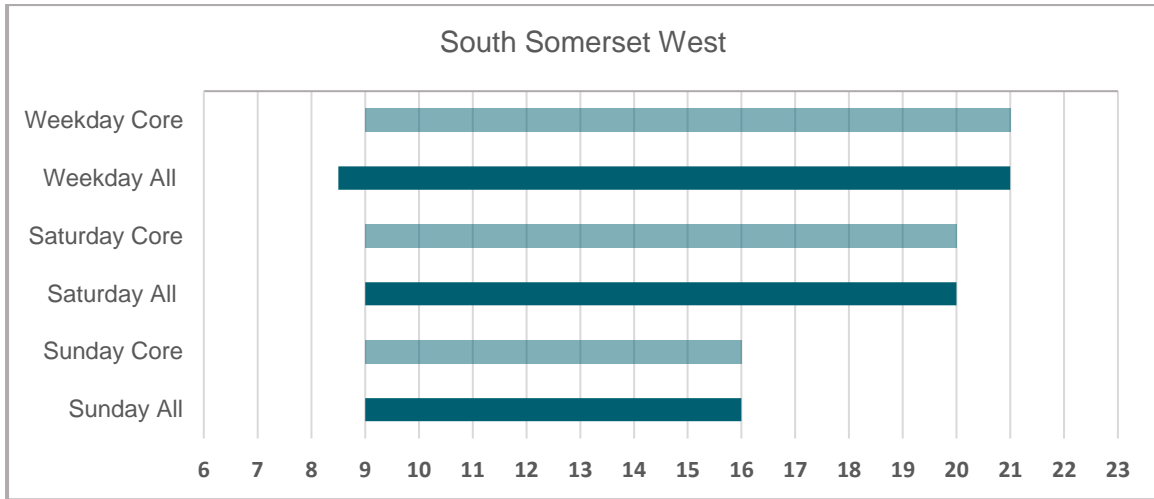


Figure 25: Opening hours of community pharmacy within the locality

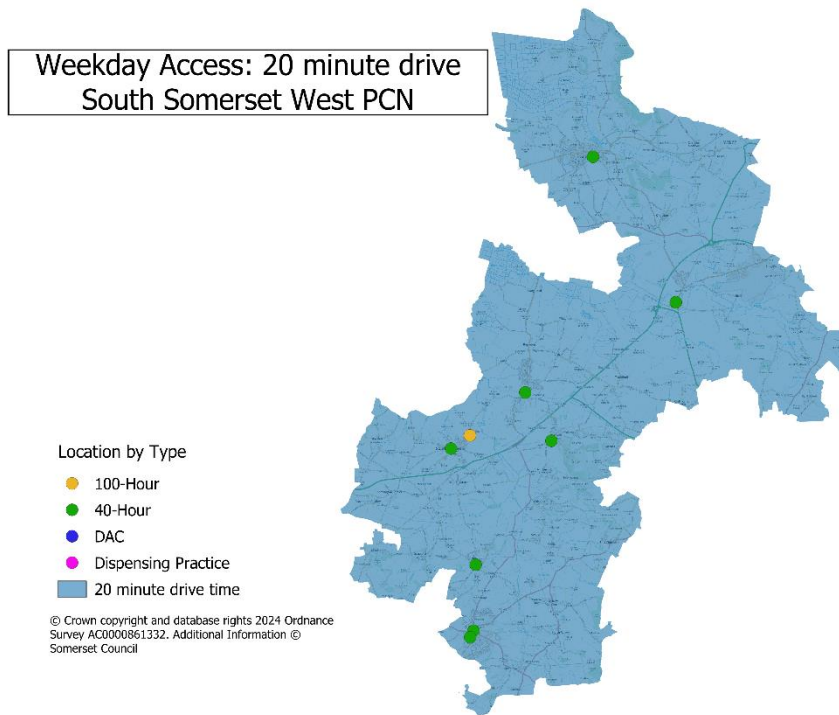


Figure 26: Weekday access: 20-minute drive

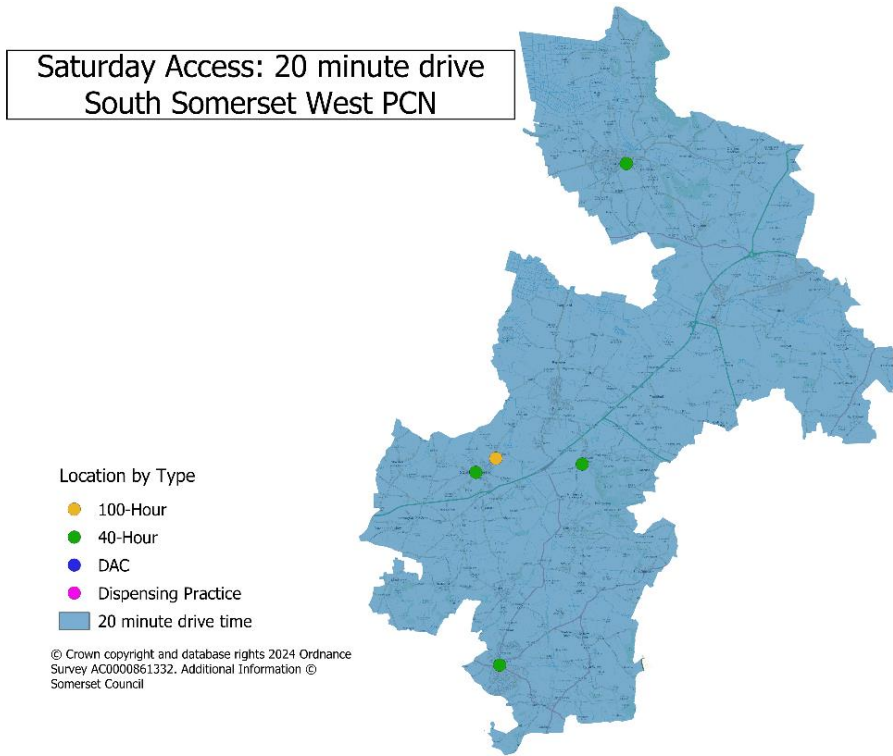


Figure 27: Saturday access: 20-minute drive

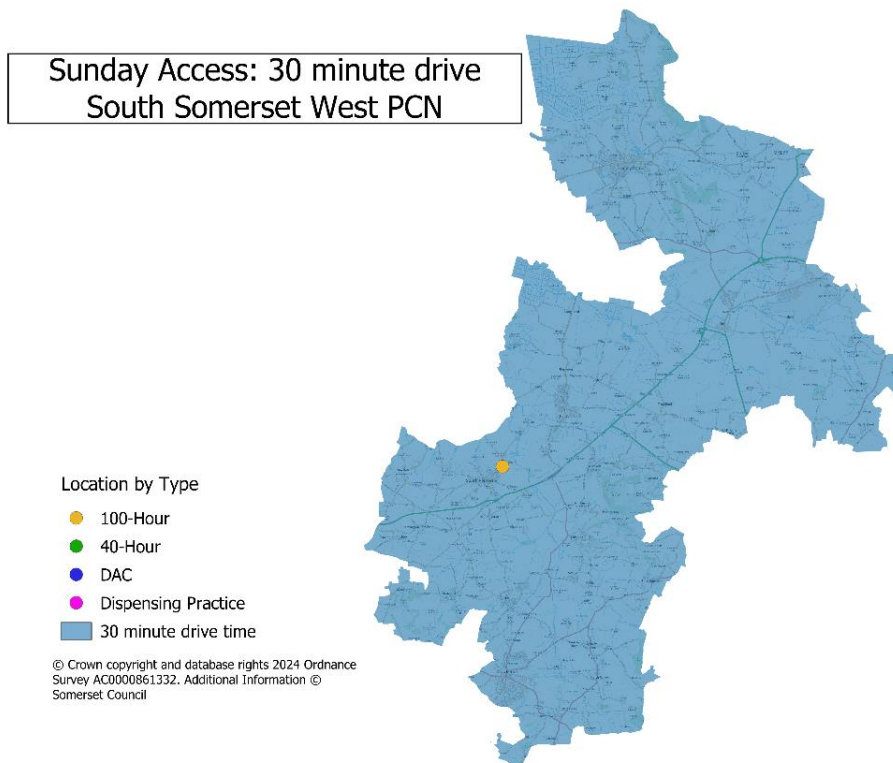


Figure 28: Sunday access: 30-minute drive

Gap Analysis

All necessary services are widely available, in this locality within the set access criteria.

Planned levels of housebuilding in this locality is approximately 300 dwellings, based on which we can conclude that there would be no gap in service created, unless this is exceeded by an additional contingency (total new dwellings 800), we would not seek to review the pharmaceutical provision.

On the basis of the information we have, we therefore conclude that there is no current gap in the provision of necessary services in South Somerset West, or expected future gap based on the predicted level of population growth and housing development.

Improvements To Access

Appliance Use Reviews and Stoma Customization Service are not provided from pharmacies in the locality; and AURs are available from Distance Appliance Contractors. All other advanced services are available in this locality.

8 Taunton Central and Tone Valley

The Taunton Central and Tone Vale area is in the centre of the county. The main settlement is the county town of Taunton, which has grown significantly in recent years. For the purposes of this analysis, we have combined two PCN areas, as both are principally served by Taunton town centre. The recent growth is set to continue with approximately 1,400 dwellings planned during the period of this PNA.

This area has a population of 95,574. Based on IMD 11,125 (12%) are considered to be in the 20% most deprived nationally.

For more information on the population, and health needs see the Primary Care Network (PCN) profiles in the annexes.

Pharmaceutical Services

There are a total of 12 community pharmacies, and two dispensing practices in this locality (and one distance selling pharmacy). This equates to 1.4 pharmaceutical providers per 10,000 population. In 2023/24 there was 11,166,689 items dispensed, an average of 12.2 items per person.

Table 8: Pharmaceutical Services, Taunton Central and Tone Valley

Service	Number Community Pharmacy Providing
Appliance Usage review	0
Community Pharmacy Influenza Vaccine	10
Contraception Service	8
Emergency hormonal contraception (Council commissioned)	12
Health Checks (Council commissioned)	1
Hypertension Case Finding	10
New Medicine Service	11
Nicotine Replacement Therapy (Council commissioned)	4
Pharmacy First	10
Stoma appliance customisation	0
Smoking Cessation	10
Varenicline (Council commissioned)	4

Access

The health needs of Taunton Central and Tone Vale vary little from the county average and do not suggest pharmaceutical needs fundamentally different for the area. The maps of travel times suggest that there is adequate access for the population, the majority of which is concentrated in Taunton itself, based on the set access criteria. Opening hours for pharmacies cover weekdays, Saturdays and Sundays.

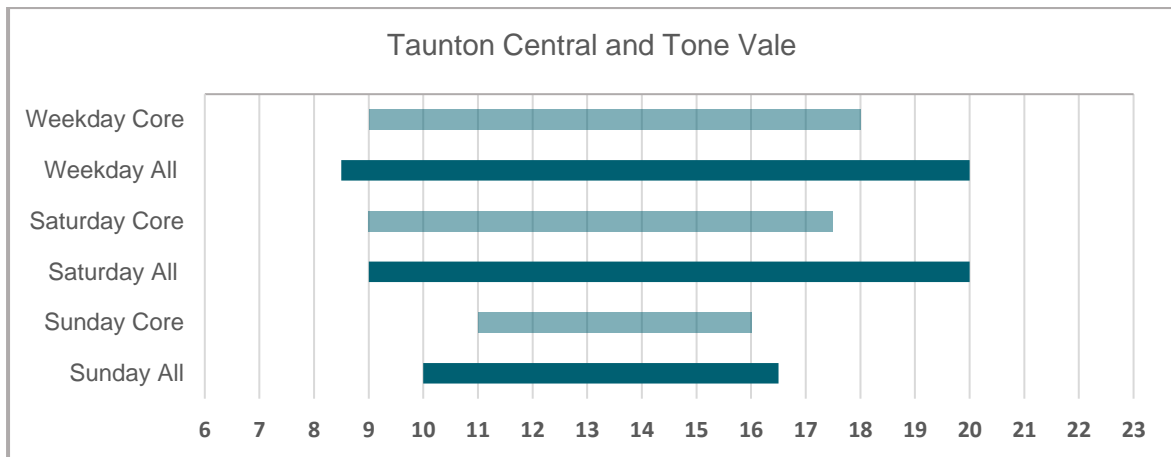


Figure 29: Opening hours of community pharmacy in the locality

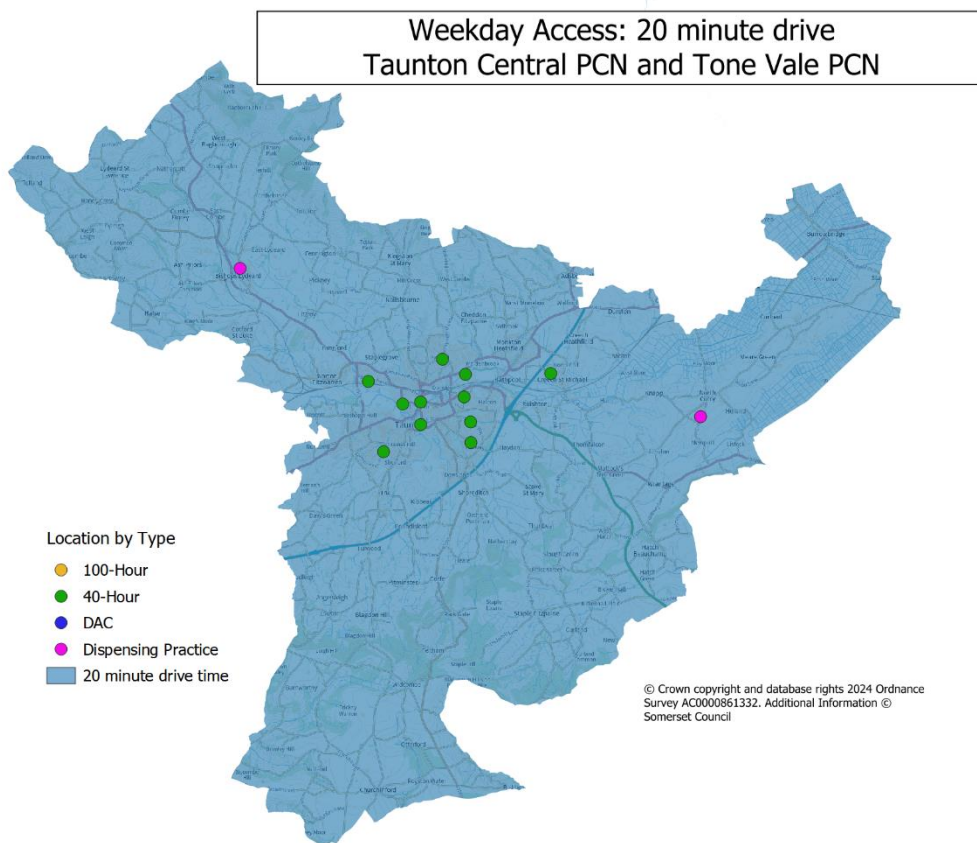


Figure 30: Weekday access: 20 min drive

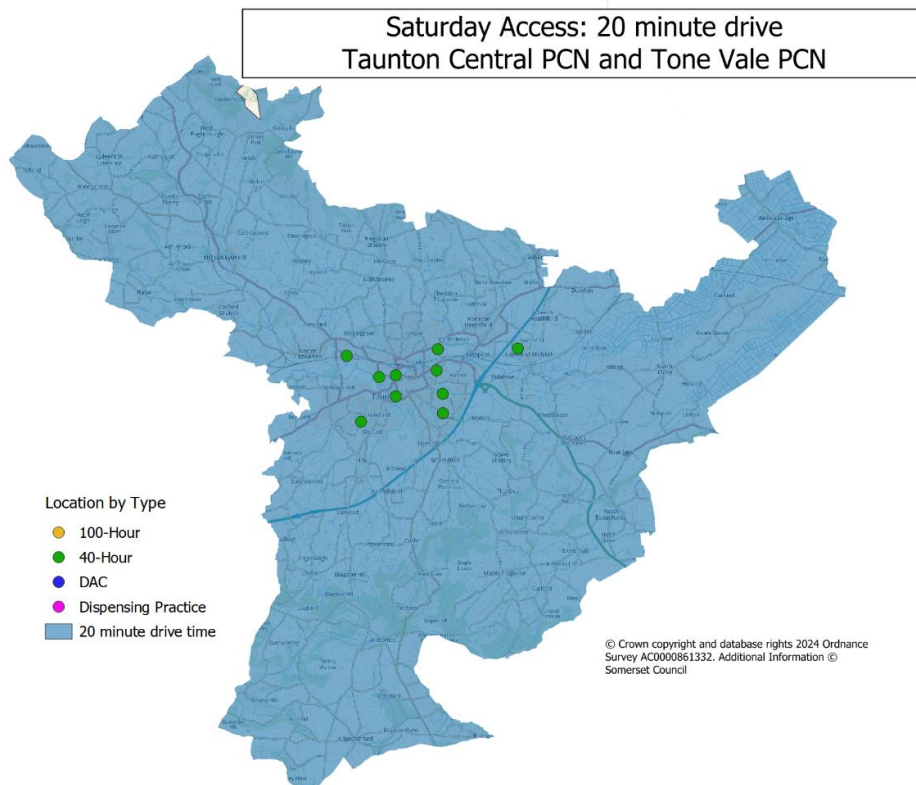


Figure 31: Saturday access: 20-minute drive (NB, small gap NW is Lydeard Hill and Middle Hill – no houses in this area.)

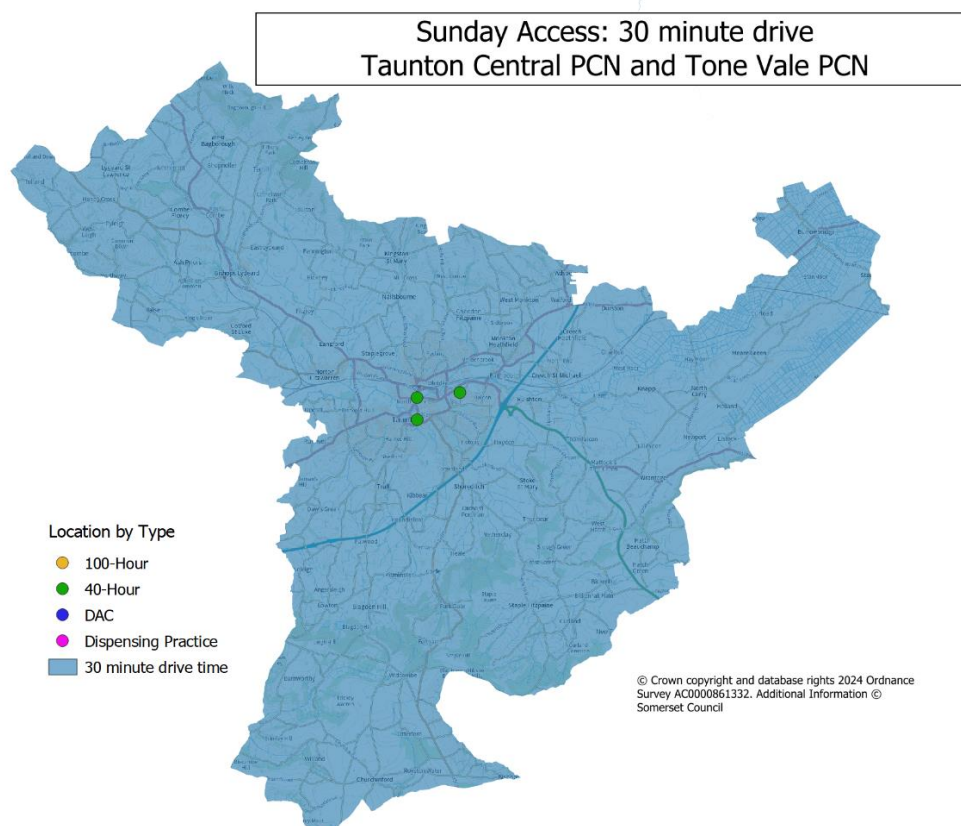


Figure 32: Sunday access: 30-minute drive

Gap Analysis

All necessary services are widely available in this locality, within the set access criteria.

Planned levels of housebuilding in this locality is approximately 1,400 dwellings, based on which we can conclude that there would be no gap in service created, unless this is exceeded by an additional contingency (total new dwellings 2100), we would not seek to review the pharmaceutical provision. Predominantly this new housing is close to Taunton, and near existing provision, which should be able to cater to this growth

On the basis of the information we have, we therefore conclude that there is no current gap in the provision of necessary services in the Taunton Central and Tone Vale PCN areas, or expected future gap based on the predicted level of population growth and housing development.

Improvements To Access

Appliance Use Reviews and Stoma Customization Service are not provided from pharmacies in the locality; and AURs are available from Distance Appliance Contractors. All other advanced services are available in this locality.

9 Taunton Deane West

Taunton Deane West is in the south west of the county, bordering Devon. The largest settlement in this locality is Wellington. Wellington has seen, and is expected to show further, growth, in common with other towns on the M5, such as Taunton and Bridgwater. Taunton Deane West's population will continue to grow with 800 planned houses across the period of this PNA.

This locality has a population of 26,931, 8% (2,076) of which live in a core20 area (an LSOA in the 20% most deprived in the UK, based on IMD).

For more information on the population, and health needs see the Primary Care Network (PCN) profiles in the annexes.

Pharmaceutical Services:

There are a total of four community pharmacies, and one dispensing practices. This equates to 1.9 pharmaceutical providers per 10,000 population. In 2023/4 there was 28,1565 items dispensed, an average of 10.5 items per person.

Table 9: Pharmaceutical Services, Taunton Deane West

Service	Number Community Pharmacy Providing
Appliance usage review	0
Community Pharmacy Influenza Vaccine	3
Contraception Service	3
Emergency hormonal contraception (Council commissioned)	4
Health Checks (Council commissioned)	0
Hypertension Case Finding	4
New Medicine Service	4
Nicotine Replacement Therapy (Council commissioned)	3
Pharmacy First	4
Stoma appliance customisation	0
Smoking Cessation	4
Varenicline (Council commissioned)	3

Access

The health needs of people in Taunton Deane West vary little from the county average and do not suggest pharmaceutical needs fundamentally different for the area. The maps of travel times suggest that there is adequate access for the large majority of the population. No pharmacies are open on Sundays, but there are in neighbouring Taunton Central and Tone Vale, and we would expect them to continue to provide services at this time for this locality. The access maps below show there is a small areas to the west of the locality which is outside the access criteria drive time of 30 minutes on a Sunday, however this area is very sparsely populated, so this itself does not constitute a gap in provision.

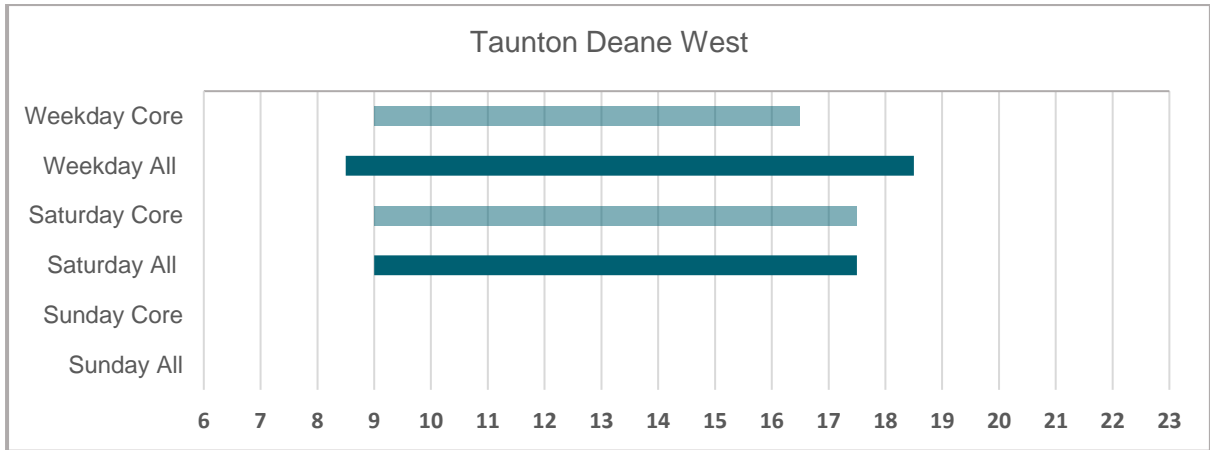


Figure 33: Opening hours of community pharmacy in the locality

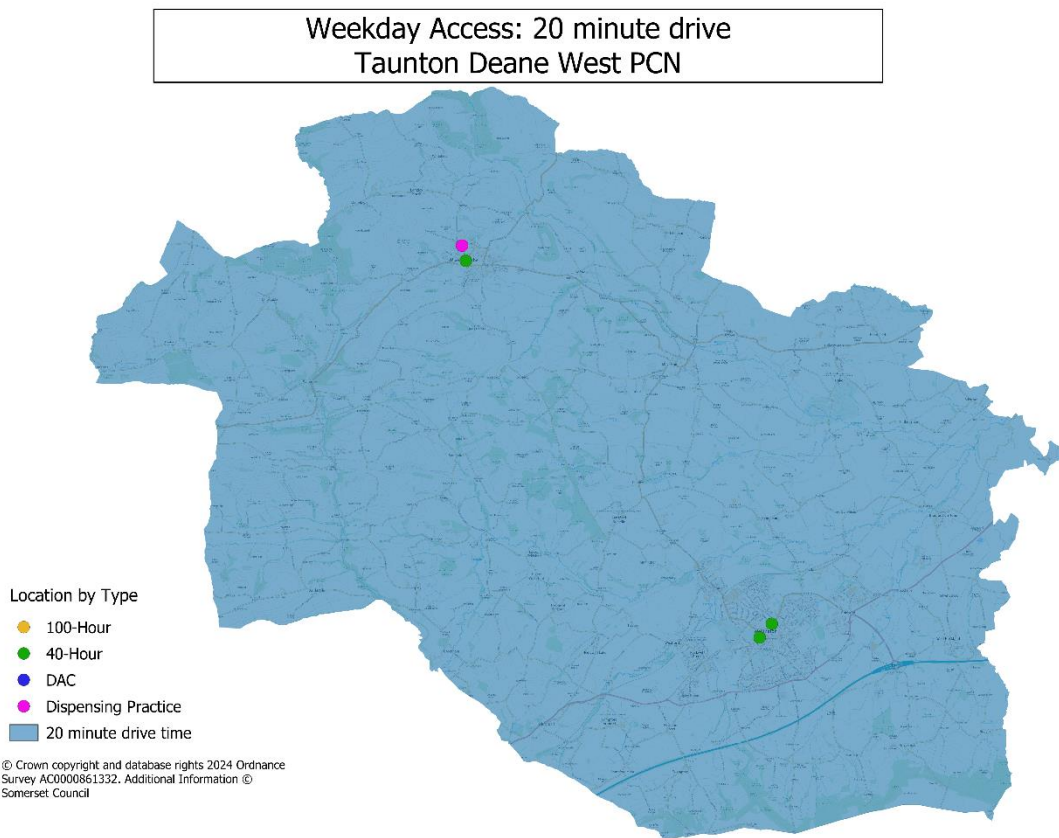


Figure 34: Weekday access: 20-minute drive

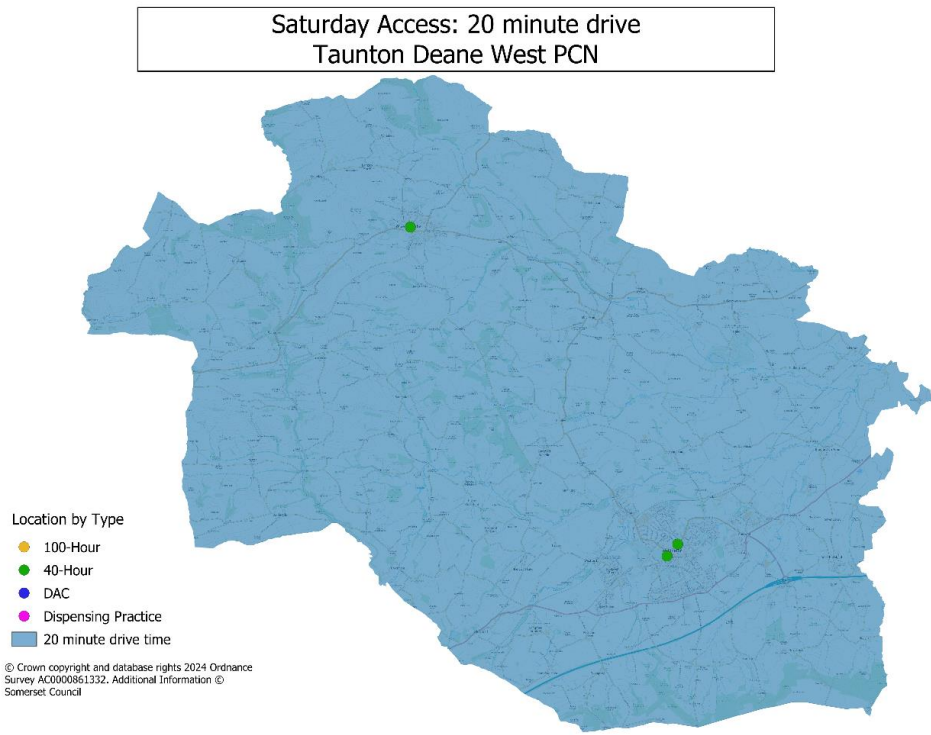


Figure 35: Saturday access: 20-minute drive

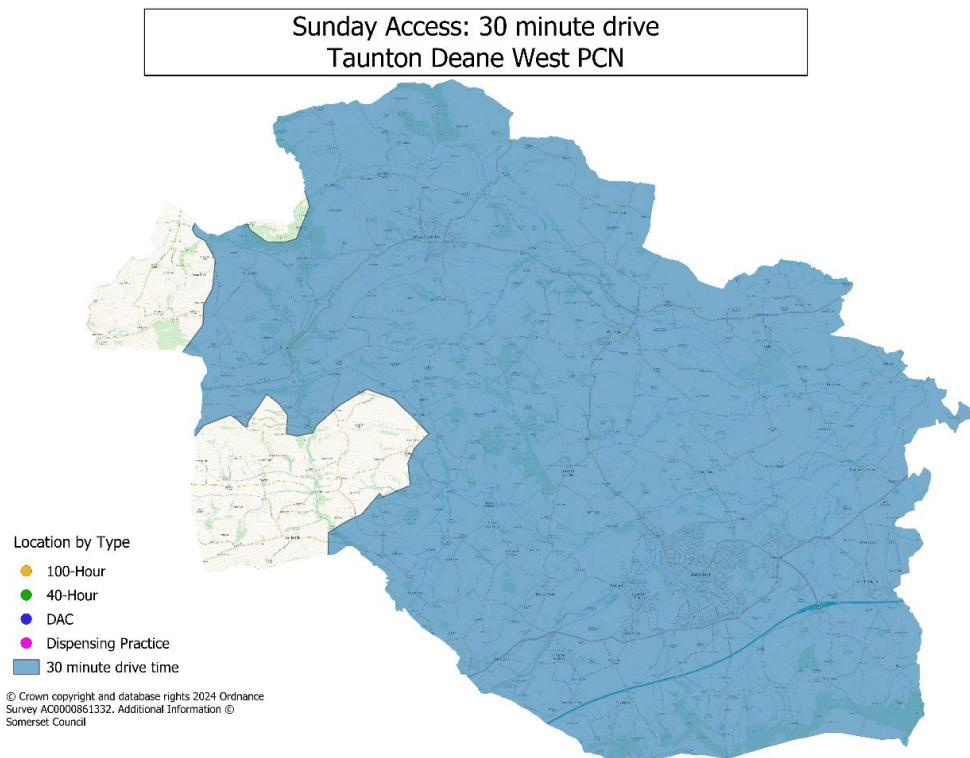


Figure 36: Sunday access: 30-minute drive (NB gaps are sparsely populated)

Gap Analysis

All necessary services are widely available in this locality, within the set access criteria.

Planned levels of housebuilding in this locality is approximately 800 dwellings, based on which we can conclude that there would be no gap in service created, unless this is exceeded by an additional contingency (total new dwellings 1,300), we would not seek to review the pharmaceutical provision.

On the basis of the information we have, we therefore conclude that there is no current gap in the provision of necessary services in Taunton Deane West area, or expected future gap based on the predicted level of population growth and housing development.

Improvements To Access

Appliance Use Reviews and Stoma Customization Service are not provided from pharmacies in the locality; and AURs are available from Distance Appliance Contractors. All other advanced services are available in this locality.

10 West Mendip

This locality is in the north of the county, with the majority of the population living in the towns of Glastonbury and Street, and the City of Wells. West Mendip stretches from the boundary with North Somerset, in the Mendip Hills to the lowlands of the Somerset Levels. There is a population of 47,712, 3% (1,528) of the population are in the 20% most deprived nationally. The expected level of housebuilding in this locality in over the duration of this PNA is 200 new dwellings.

For more information on the population, and health needs see the Primary Care Network (PCN) profiles in the annexes.

Pharmaceutical Services:

There are a total of seven community pharmacies, and zero dispensing practices, as of January 2025. This equates to 1.5 pharmaceutical providers per 10,000 population. In 2023/24 there was 723,859 items dispensed in 2024, an average of 15.2 items per person.

Table 10: Pharmaceutical Services, West Mendip

Service	Number Community Pharmacy Providing
Appliance usage review	0
Community Pharmacy Influenza Vaccine	6
Contraception Service	4
<i>Emergency hormonal contraception (Council commissioned)</i>	4
<i>Health Checks (Council commissioned)</i>	0
Hypertension Case Finding	7
New Medicine Service	7
<i>Nicotine Replacement Therapy (Council commissioned)</i>	2
Pharmacy First	7
Stoma appliance customisation	0
Smoking Cessation	7
<i>Varenicline (Council commissioned)</i>	3

Access

The health needs of adults in West Mendip vary little from the county average. The children's indicators are mixed, but do not suggest pharmaceutical needs fundamentally different for the area. Pharmacies are concentrated in the urban areas. There are pharmacies open on all days of the week, and all areas fall within the access criteria drive times.

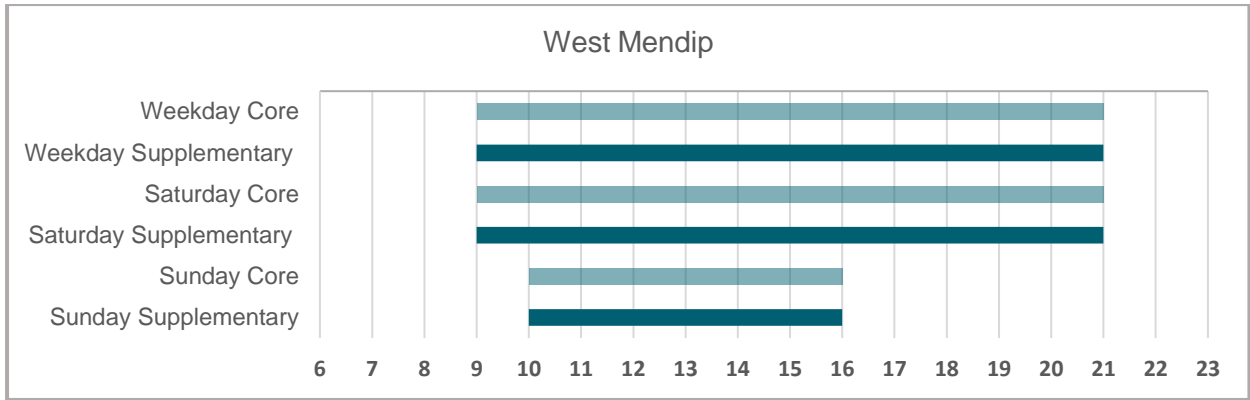


Figure 37: Opening hours of community pharmacy within the locality

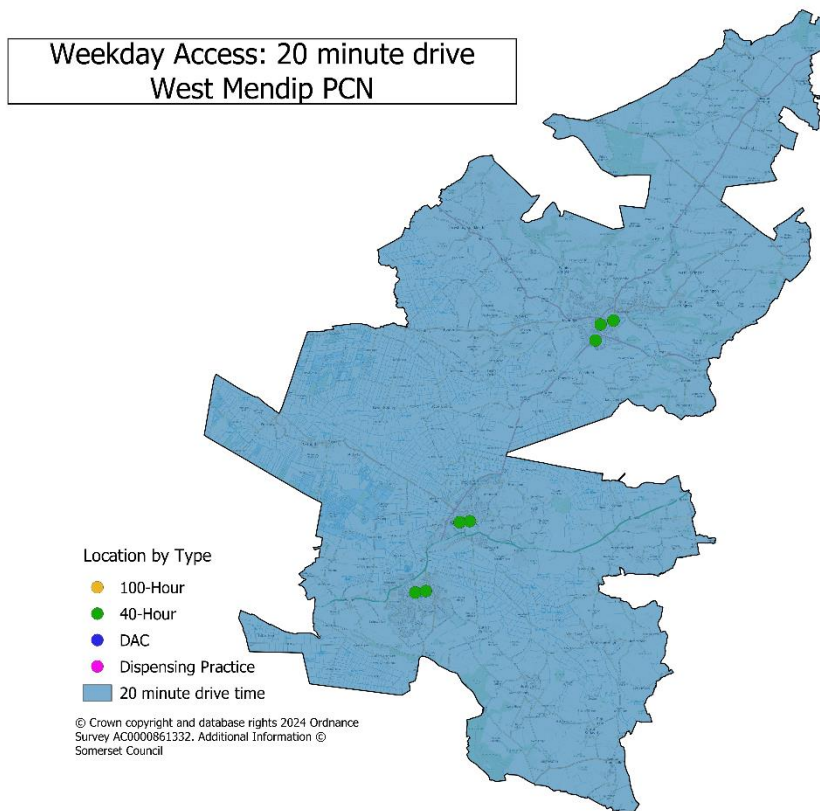


Figure 38: Weekday access: 20-minute drive

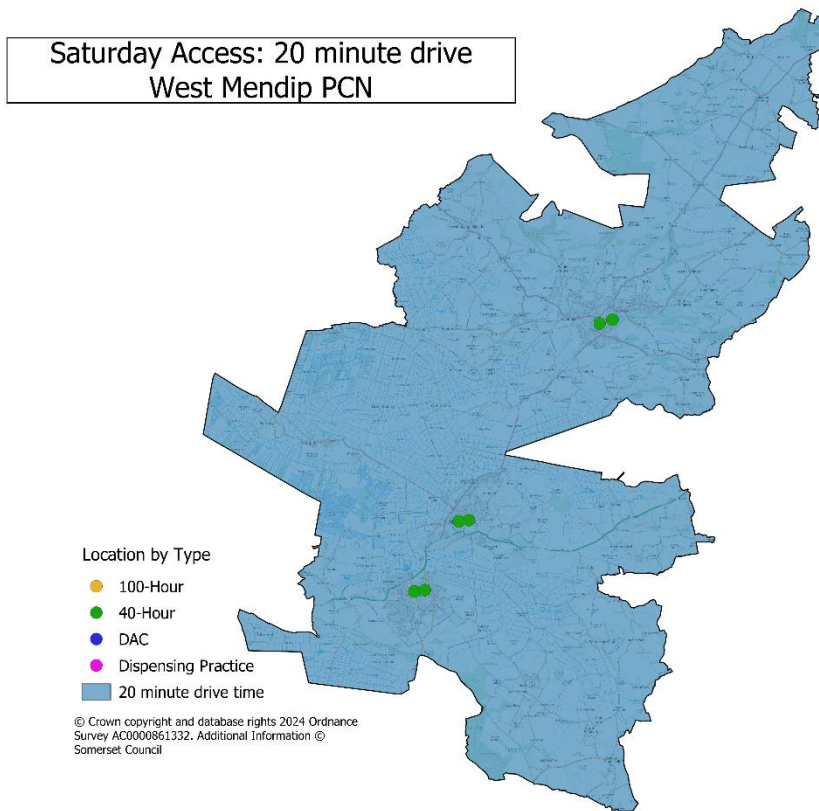


Figure 39: Saturday access: 20-minute drive

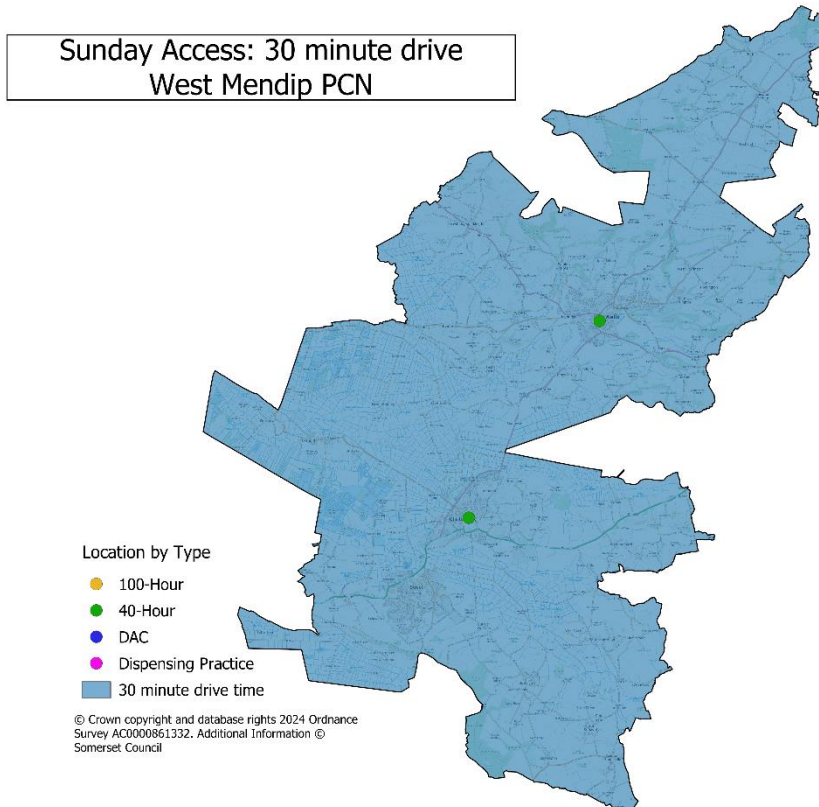


Figure 40: Sunday access: 30-minute drive

Gap Analysis

All necessary services are widely available in this locality, within the set access criteria.

Planned levels of housebuilding in this locality is approximately 200 dwellings, based on which we can conclude that there would be no gap in service created, unless this is exceeded by an additional contingency (total new dwellings 700), we would not seek to review the pharmaceutical provision.

On the basis of the information we have, we therefore conclude that there is no current gap in the provision of necessary services in West Mendip, or expected future gap based on the predicted level of population growth and housing development.

Improvements To Access

Appliance Use Reviews and Stoma Customization Service are not provided from pharmacies in the locality; and AURs are available from Distance Appliance Contractors. All other advanced services are available in this locality.

11 West Somerset

Most of the population in the West Somerset locality live in the coastal area between Minehead (the largest settlement) and Watchet and Williton. The inland area is made up largely of the Brendon Hills and Exmoor, and very sparsely populated.

There is a population of 32,798, none of which are in core20. There is planning for 750 new houses across the period of this PNA, predominantly close to existing services.

For more information on the population, and health needs see the Primary Care Network (PCN) profiles in the annexes.

Pharmaceutical Services:

There are a total of eight community pharmacies, and two dispensing practices, as of January 2025. This equates to 3.0 pharmaceutical providers per 10,000 population. In 2023/4 there was 565,875 items dispensed in 2024, an average of 17.3 items per person.

Table 11: Pharmaceutical Services, West Somerset

Service	Number Community Pharmacy Providing
Appliance Usage review	0
Community Pharmacy Influenza Vaccine	5
Contraception Service	5
<i>Emergency hormonal contraception (Council commissioned)</i>	7
<i>Health Checks (Council commissioned)</i>	0
Hypertension Case Finding	8
New Medicine Service	8
<i>Nicotine Replacement Therapy (Council commissioned)</i>	2
Pharmacy First	8
Stoma appliance customisation	0
Smoking Cessation	8
<i>Varenicline (Council commissioned)</i>	8

Access

Although the health needs of West Somerset are somewhat greater than the average for the county, the main types of ill health are similar, and pharmacies are in the main settlements. Rural areas are served by two dispensing GP practices. We recognise that this area of the county has the largest proportion of dwellers in sparse countryside for whom access to services poses the greatest difficulties; however, this does not just apply to pharmaceutical services.

There is access to pharmacies within this locality on all days of the week, with the majority of the population being within the access criteria times set. There are however areas particularly around Exmoor, the Brendon Hills, that are outside the access criteria, these areas are very sparsely populated and thus this does not constitute a gap in delivery.

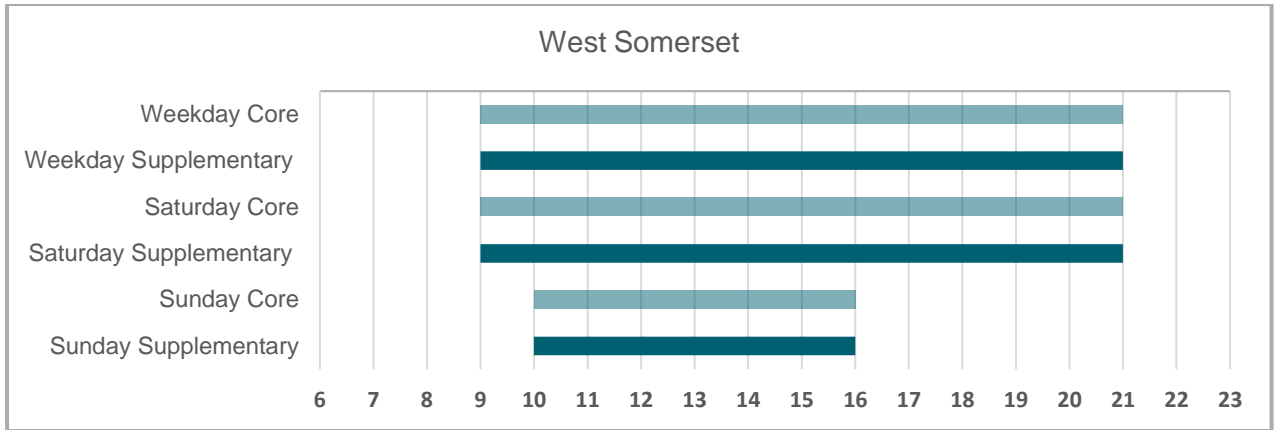


Figure 41: Opening hours of community pharmacy within the locality

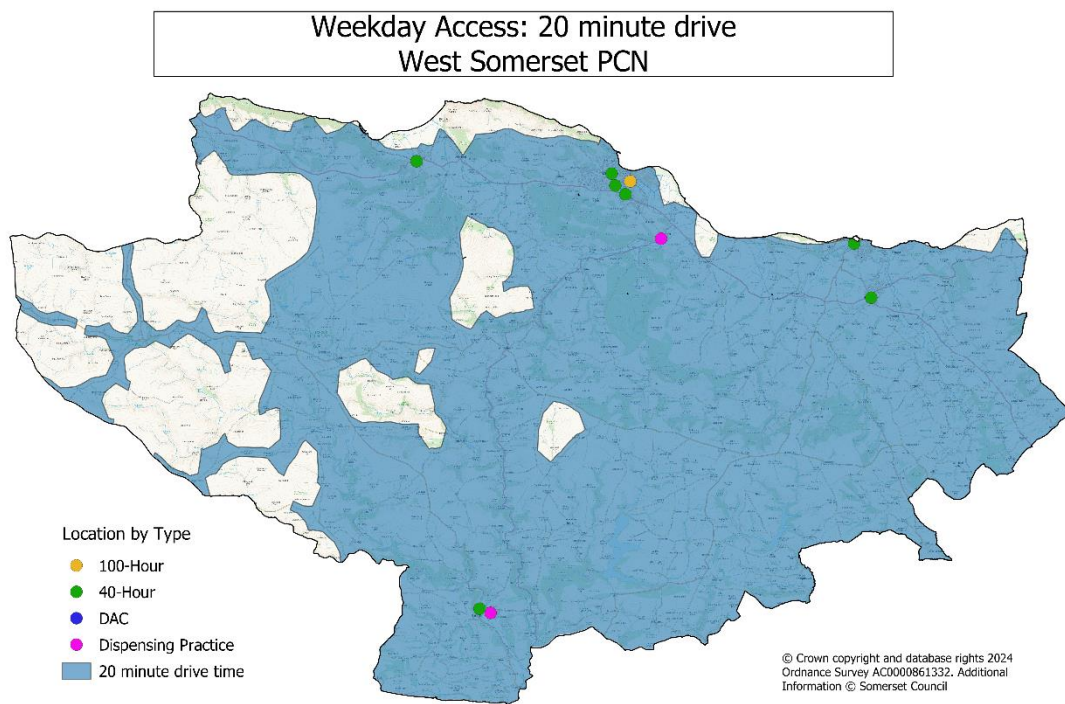


Figure 42: Weekday access: 20-minute drive

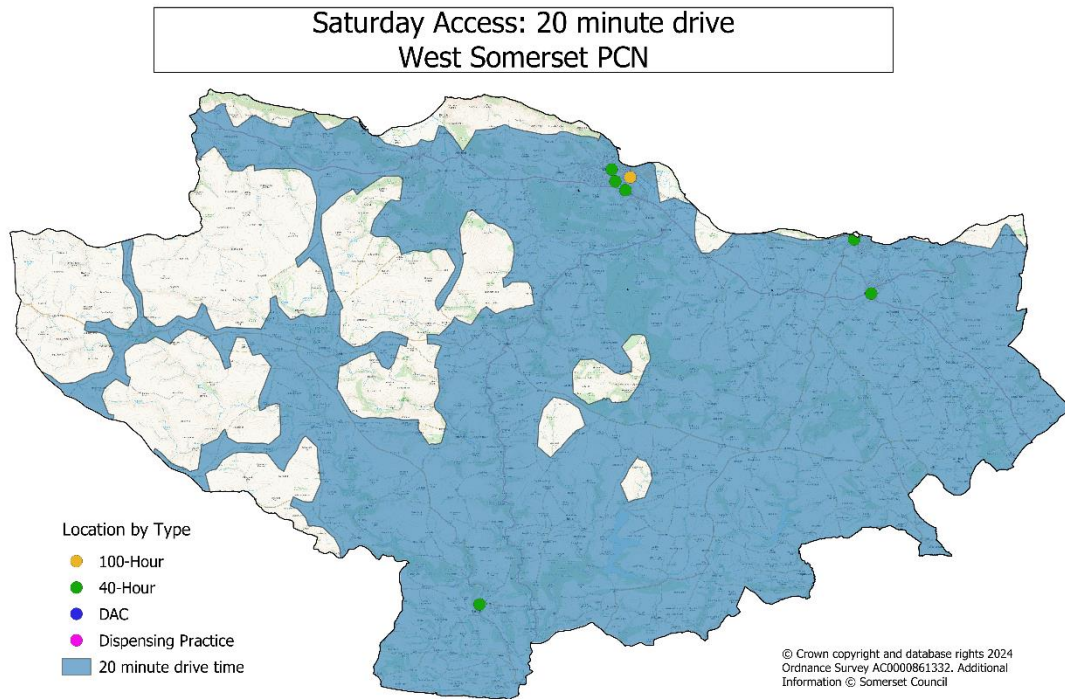


Figure 43: Saturday access: 20-minute drive

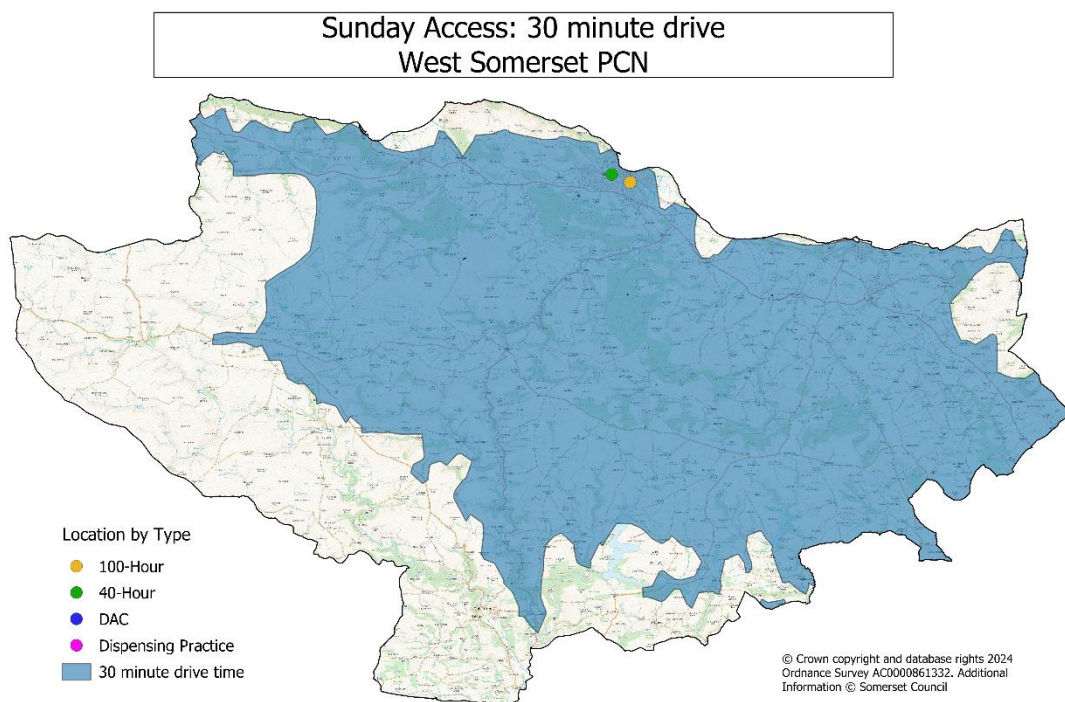


Figure 44: Sunday access: 30-minute drive

Gap Analysis

All necessary services are available in this locality, within the set access criteria.

Planned levels of housebuilding in this locality is approximately 750 dwellings, based on which we can conclude that there would be no gap in service created, unless this is exceeded by an additional contingency (total new dwellings 1,250), we would not seek to review the pharmaceutical provision.

On the basis of the information we have, we therefore conclude that there is no current gap in the provision of necessary services in West Somerset, or expected future gap based on the predicted level of population growth and housing development.

Improvements To Access

Appliance Use Reviews and Stoma Customization Service are not provided from pharmacies in the locality; and AURs are available from Distance Appliance Contractors. All other advanced services are available in this locality.

There could be gaps created should all pharmacies reduce to only core hours provision; this is however unlikely.

12 Yeovil

Yeovil locality is in the south of the county, on the border with Dorset. There is a population of 55,652, the majority of which live in the town of Yeovil. 16% (8,855) of this population live in an area considered to be in the 20% most deprived nationally. In this locality there is planned housing of approximately 400 dwellings over the period this PNA covers.

For more information on the population, and health needs see the Primary Care Network (PCN) profiles in the annexes.

Pharmaceutical Services:

There are a total of 11 community pharmacies, and one dispensing practices, as of January 2025. This equates to 2.2 pharmaceutical providers per 10,000 population. In 2023/24 there was 788,543 items dispensed in this locality, an average of 14.1 items per person.

Table 12: Pharmaceutical Services, Yeovil

Service	Number Community Pharmacy Providing
Appliance usage review	0
Community Pharmacy Influenza Vaccine	11
Contraception Service	10
<i>Emergency hormonal contraception (Council commissioned)</i>	10
<i>Health Checks (Council commissioned)</i>	1
Hypertension Case Finding	11
New Medicine Service	11
<i>Nicotine Replacement Therapy (Council commissioned)</i>	3
Pharmacy First	11
Stoma appliance customisation	0
Smoking Cessation	11
<i>Varenicline (Council commissioned)</i>	8

Access

The health needs of individuals in Yeovil vary little from the county average and do not suggest pharmaceutical needs fundamentally different for the area. The maps of travel times below show there is access in line with the set access criteria for the majority of the population. There is also opening hours on all days of the week.

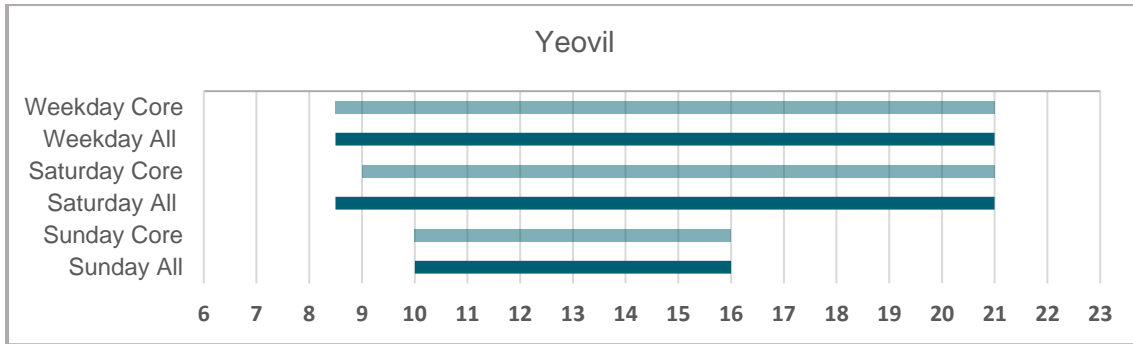


Figure 45: Opening hours of community pharmacy within the locality

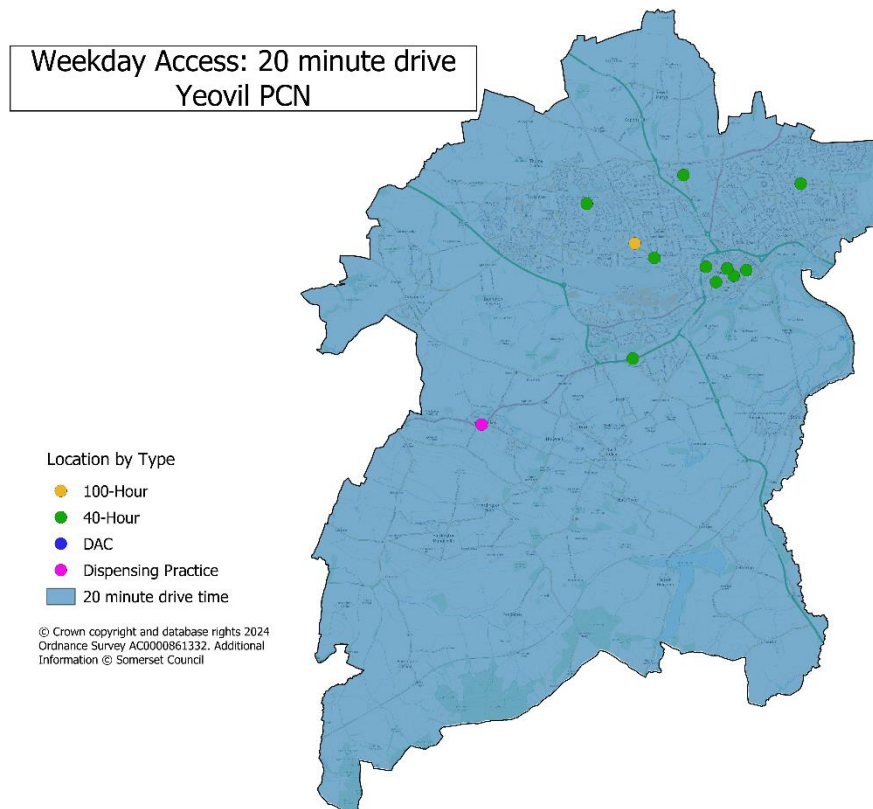


Figure 46: Weekday access: 20-minute drive

Saturday Access: 20 minute drive
Yeovil PCN

Location by Type

- 100-Hour
- 40-Hour
- DAC
- Dispensing Practice
- 20 minute drive time

© Crown copyright and database rights 2024
Ordnance Survey AC0000861332. Additional
Information © Somerset Council

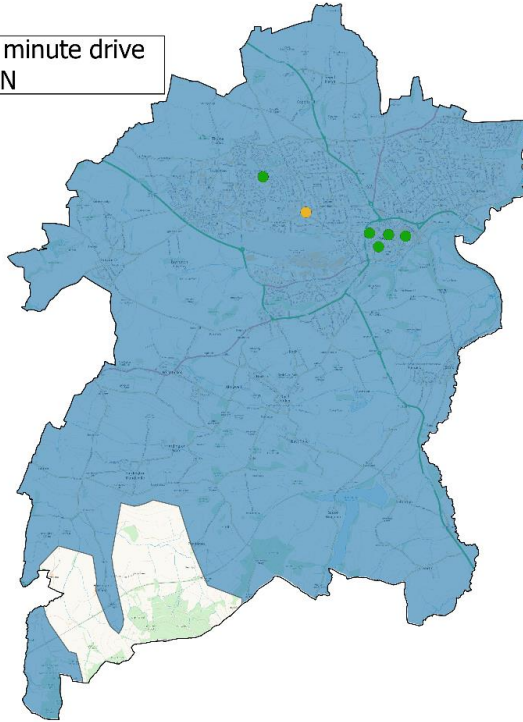


Figure 47: Saturday access: 20-minute drive (NB, the gap to the south of the locality is rural, and sparsely populated).

Sunday Access: 30 minute drive
Yeovil PCN

Location by Type

- 100-Hour
- 40-Hour
- DAC
- Dispensing Practice
- 30 minute drive time

© Crown copyright and database rights 2024
Ordnance Survey AC0000861332. Additional
Information © Somerset Council

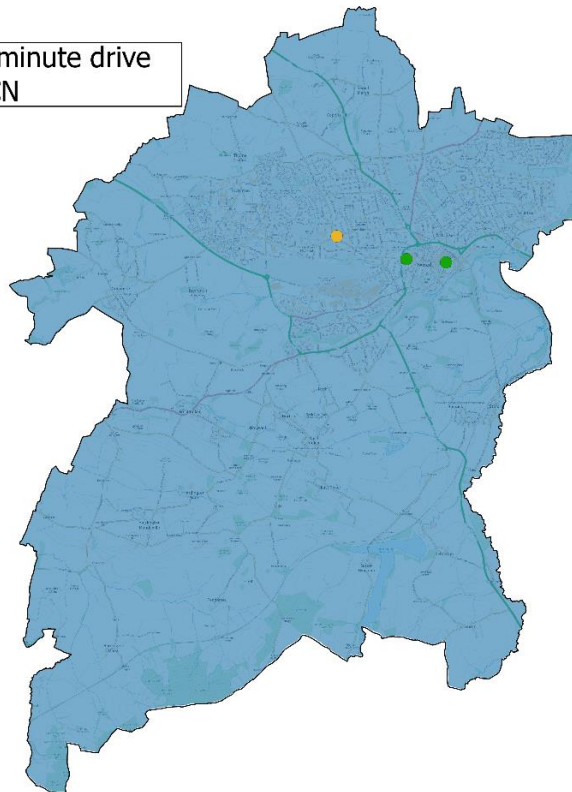


Figure 48: Sunday Access: 30-minute drive

Gap Analysis

All necessary services are widely available in this locality, within the set access criteria.

Planned levels of housebuilding in this locality is approximately 400 dwellings, based on which we can conclude that there would be no gap in service created, unless this is exceeded by an additional contingency (total new dwellings 900), we would not seek to review the pharmaceutical provision.

On the basis of the information we have, we therefore conclude that there is no current gap in the provision of necessary services in Yeovil, or expected future gap based on the predicted level of population growth and housing development.

Improvements To Access

Appliance Use Reviews and Stoma Customization Service are not provided from pharmacies in the locality; and AURs are available from Distance Appliance Contractors. All other advanced services are available in this locality.

References

¹ NHSBSA. Dispensing contractors' data. Practice prescribing dispensing data. Available at: [Dispensing contractors' data | NHSBSA](#). (Accessed: 25th March 2025)